

MÖKE

GERMANY 1927

CATALOGUE
SPRING / SUMMER

22



MÖVE

We create sensual and sustainable experiences for all life phases and provide a feeling of security - day by day.

For almost a century MÖVE has stood for the highest quality, innovation and elegance and continues to set new standards for feel-good experiences. Since its foundation in 1927 MÖVE has been a guarantee for reliable top quality in the terry towelling sector. Cosy towels, fluffy bathrobes and soft bathmats - *Made in Germany* - have always been the hallmark of the family-run company, which is now in its 3rd generation.

We still feel very connected to our production site in Germany and the employees there. They all make their own valuable contribution every day and ensure with joy, enthusiasm and passion that all products leave our premises reliably and in the best quality. The competent in-house design team, the fully integrated on-site production as well as the experience and the great know-how in manufacturing according to the highest standards were and still are the key to our long-standing success.

This year we celebrate our 95th anniversary. For us, this is reason enough to take another look at the brand's eventful history and reflect on our development. MÖVE has been one of Germany's best-known and most popular brands of terry towelling since the 1970s and has developed quickly and continuously over the years into one of the leading premium brands for products for the bathroom, bed and home. From a traditional terry manufacturer MÖVE has become a major supplier of lifestyle products that continues to impress with its exquisite and extensive range of products for the home.

We have also taken our anniversary as an opportunity to strategically re-align MÖVE for the future. In this way, we are reacting to the changes in society and market policy and will continue to be in a position to be the leading premium brand for bathrooms, beds and living in the future and to clearly distinguish ourselves from our competitors.

Moreover, as a manufacturing company, we are aware of our special responsibility with regard to people, nature and the environment. For this reason, we invest continuously and unceasingly in all areas of the company and in this way promote sustainability and environmental protection at our production site in Großschönau/ Oberlausitz (Upper Lusatia). Through technical innovations and technological improvements, we continually contribute to significantly reducing our energy and resource consumption. Our geographical situation and the production *Made in Germany* further ensure short and thus environmentally friendly transport routes. You can find more information on this exciting topic and our commitment on pages 56 — 59.

We hope you enjoy our brand-new catalogue and that it will surprise and inspire you as much as it has us.

Sincerely, Norbert H. Vossen

SPRING / SUMMER

Trends..... 01

PAISLEY..... 06
ORGANIC 16
ICONIC 28
SUMMER PIQUÉE.....42

MÖVE Sustainability 56

Classics 60

ELEMENTS 60
BAMBOO LUXE72
PIQUÉE..... 88
LOFT102
SUPERWUSCHEL120
BROOKLYN140
HOMEWEAR.....150

Home Spa.....166

WELLBEING 166
WELLNESS 186
EDEN 200

Bathrobes 216

Accessories242

SAUNA 244
STREAMLINE 248
LINE 252
TEAK 256
BLACK & WHITE 264
BLACK VELVET 268
NEW ORBIT 272
DECO 276
STAND 280
PUSH 282
VELVET 284
MIRRORS..... 286

Baskets & More290

BAMBOO 292
WEAVE..... 296
CANVAS297
TUBE..... 298
TWEED..... 300
WOOD 302

Candles & Scents.....304

WELLBEING 306
APOTHECARY 308
ESSENTIALS 310
SIGNATURE..... 312
SOAPS 314

OEKO-TEX-STANDARD, GOTS,
BESTELLKONDITIONEN 316
CREDITS..... 318

Content

PAISLEY

The timeless and attractive PAISLEY collection is a beautiful combination of tradition and modernity. The well-travelled paisley pattern, which is central to this range, has been skilfully applied to fluffy hand towels and shower towels made of the finest cotton using the intricate Jacquard weaving technique.

The subtle stripe pattern of the wide hem is created by weaving the warp and weft thread from one selvedge to the other - but without loops. It is an eye-catching feature that lends additional sophistication and value to the collection. A wonderfully soft and absorbent unisex bathrobe made of cotton velour with silver grey piping perfectly completes the collection.



The attractive hand and shower towels in rich burgundy and black immediately catch the eye with their striking look. The intricately woven all-over paisley pattern and the wide folded striped hem complement each other perfectly.



PAISLEY Allover
1-1223/8744
081 black



081 black
021 burgundy

PAISLEY Allover

Art.-Nr.	Material	Size (cm)
1-1223/8744	Paisley allover with looped hem 100% cotton, 540 gsm	50 x 100 80 x 150



021 burgundy
081 black

→
PAISLEY Doubleface
1-1226/8744
021 burgundy

PAISLEY Doubleface

Art.-Nr.	Material	Size (cm)
1-1226/8744	Double face with looped hem 100% cotton, 540 gsm	50 x 100 80 x 150



~ The hand and shower towels in a double face look with a grey reverse are the perfect complement to the patterned paisley towels. The wide folded hem in a striped look is an additional eye-catcher.



PAISLEY
Shawl collar bathrobe
2-7927/0903
081 black

~ The calf-length velour bathrobe impresses with its softness and eye-catching all-over paisley pattern. The elegant shawl collar and patch pockets are finished with a high-quality silver grey satin piping.



081 black

PAISLEY Shawl collar bathrobe

Art.-Nr.	Material	Size
2-7927/0903	Shawl collar bathrobe, velour 100% cotton, length 125 cm, 385 gsm	S M L XL



PAISLEY Allover
1-1223/8744
021 burgundy
081 black

WOOD Bath accessories
S. 304

SUPERWUSCHEL Plain
0-1725/8775
761 burgundy



A



B



D



C



E

FITS PERFECTLY TO PAISLEY

A. Apothecary ^{p.308} — B. Superwuschel ^{p.120} — C. Black & White ^{p.264}
D. Tube ^{p.298} — E. Black & White ^{p.264}

ORGANIC

Sustainable design is beautiful! Environmentally friendly materials and resource-saving production are the focus of the attractive organic terry collection ORGANIC, which was created with great consideration for people and nature. The focus is on three uniquely beautiful designs, all made from skin-friendly GOTS-certified organic cotton. The ecologically pure natural fibre is sustainably cultivated without pesticides or fertilisers and is processed in a completely CO₂ -neutral way through the use of 100% solar energy.

The guest towels, hand towels and shower towels are extra soft on the skin, absorbent and durable and are a winner with their elaborate and careful workmanship and great attention to detail.



~ The discreet all-over pattern of small checks and stripes adorns the hand and shower towels from resource-saving production. The ecologically pure organic cotton in high-quality terry is particularly sustainable.



ORGANIC Allover
1-1246/3542
041 nature/blue



071 nature/cashmere
061 nature/green
041 nature/blue

ORGANIC Wavy look

Art.-Nr.	Material	Size (cm)
1-1243/3541	Wavy look with looped hem 100% organic cotton ^(GOTS) , 530 gsm	50 x 100 80 x 150
Delivery date 15.02.2022		

~ The soft hand and shower towels have a stunning, delicate wavy look and a high-quality folded hem. The production is particularly resource-friendly and sustainable as it uses ecological organic cotton.

ORGANIC Wavy look
1-1243/3541
071 nature/cashmere
061 nature/green

ORGANIC Allover
1-1246/3542
071 nature/cashmere

ORGANIC Doubleface
1-1248/3543
061 nature/green





ORGANIC Doubleface
1-1248/3543
071 nature/cashmere

ORGANIC Allover
1-1246/3542
061 nature/green



071 nature/cashmere
061 nature/green
041 nature/blue

ORGANIC Allover

Art.-Nr.	Material	Size (cm)
1-1246/3542	Allover with looped hem 100% organic cotton ^(GOTS) , 460 gsm	50 x 100 80 x 150
Delivery date 15.02.2022		



- 041 nature/cashmere
- 061 nature/green
- 071 nature/blue

ORGANIC Doubleface

Art.-Nr.	Material	Size (cm)
1-1248/3543	Doubleface with fringes + looped hem 100% organic cotton ^(GOTS) , 430 gsm	50 x 30
		50 x 100
		80 x 150
	Delivery date 01.04.2022	



ORGANIC Doubleface 1-1246/3543
071 nature/cashmere

ORGANIC Allover
1-1246/3542
071 nature/cashmere

~ The simple guest towels, hand towels and shower towels in a double face look perfectly complement the patterned designs of the series. Beautiful details include the flat-woven striped hem and the soft fringes. Production takes place with a lot of consideration for people and the environment.



ORGANIC Wavy look
1-1243/3541
071 nature/cashmere



A



B



C



D



E



F



G



H



I

FITS PERFECTLY TO ORGANIC

A. Streamline ^{p.248} — B. Apothecary ^{p.308} — C. Streamline ^{p.248} — D. Wellness ^{p.186} — E. Wood ^{p.302}
F. Wellness ^{p.186} — G. Streamline ^{p.248} — H. Signature ^{p.312} — I. Wood ^{p.302}

ICONIC

We took our 95th company anniversary as an opportunity to take a look back through our archives. We came across the iconographic seagull signet and brought it back to life. As early as 1952, it adorned the outfits of the German swimming team at the Olympic Games in Helsinki and today, in reminiscence of that time, it embellishes our ICONIC collection.

To underline the young and sporty character, the fluffy hand and shower towels in radiant colours are complemented by a jersey hooded bathrobe in grey melange - also with an embroidered signet.





- 130 lemon
- 233 begonia
- 001 snow
- 410 cornflower
- 850 stone

ICONIC Plain

Art.-Nr.	Material	Size (cm)
1-1303/8629	Plain with folded hem and embroidered seagull signet, 100% cotton, 520 gsm	30 x 50 50 x 100 67 x 140
	Delivery date 01.03.2022	



ICONIC Plain
1-1303/8629
130 lemon



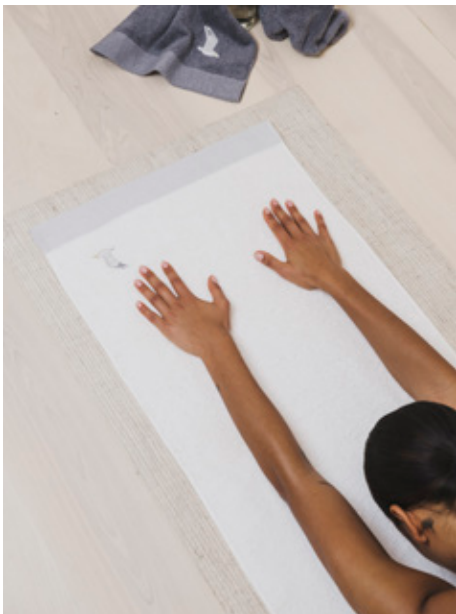
~ The sporty towel series instantly catches the eye with its bright colours and beautiful details. The guest towels, hand towels and shower towels have been designed with a wide, intricately folded hem and are embroidered with the iconic graphic seagull signet.

ICONIC Plain
1-1303/8629
001 snow





→
ICONIC Plain
1-1303/8629
 410 cornflower



→
ICONIC Plain
1-1303/8629
 850 stone
 001 snow





ICONIC Hooded robe

Art.-Nr.	Material	Size
2-7984/0672 081 grey	Jersey hooded robe with embroidered seagull signet, 56% polyester, 44% cotton, length 120 cm, 290 gsm	XS S M L XL
Delivery date 01.03.2022		



It doesn't get much cosier than this! The grey jersey hooded robe is unbelievably soft and is a winner with its sporty details: knitted rib trims on the sleeves, patch pockets with decorative stitching, embroidered seagull signet and casual tie belt.

→
ICONIC Plain
1-1303/8629
130 lemon



ICONIC Plain
1-1303/8629
850 stone





ICONIC Plain
1-1303/8629
233 begonia



A



B



D



C



E

FITS PERFECTLY TO ICONIC

A. Essentials p.310 — B. Piquée p.88 — C. Line p.252
D. Line p.252 — E. Soaps p.314

SUMMER PIQUÉE

The colourfully underlaid waffle piquée of this stylish collection is a summery interpretation of our Mediterranean classic PIQUÉE. The light hand and bath towels in summery colours impress with their colourful stripes and their short white fringes, which are created from the warp threads.

The fine cotton used ensures an extra soft feel on the skin. A light kimono in sunny yellow or silver grey perfectly complements the towels and makes SUMMER PIQUÉE the perfect companion for a day at home, on the beach or by the pool.





SUMMER PIQUÉE Waffle piquée
1-1298/8762
015 snow/yellow



SUMMER PIQUÉE Waffle piquée
1-1298/8762
045 snow/blue



Summery-light and colourful - with these characteristics, the attractive hand and bath towels will win you over in an instant. The intricately woven stripes and the playful white fringes are beautiful details that immediately catch the eye.

SUMMER PIQUÉE Waffle piquée
1-1298/8762
025 snow/rose





- 015 snow/yellow
- 025 snow/rose
- 045 snow/blue
- 085 snow/stone

SUMMER PIQUÉE Waffle piquée

Art.-Nr.	Material	Size (cm)
1-1298/8762	Waffle piquée 100% cotton, 350 gsm	50 x 100 90 x 180
Delivery date 15.03.2022		

SUMMER PIQUÉE Waffle piquée
1-1298/8762
045 snow/blue



~ This summery, light kimono is coordinated with the towel series. The prominent stripes that run from the collar to the hem make it a real eye-catcher. Patch pockets and a tie belt provide extra comfort.



015 snow/yellow

085 snow/stone



SUMMER PIQUÉE Kimono

Art.-Nr.	Material	Size
2-7974/0175	Kimono, waffle piquée 100% cotton, length 110 cm, 350 gsm	XS (only in 015)
		S
		M
		L
	Delivery date 15.03.2022	XL (only in 085)



SUMMER PIQUÉE Waffle piquée
1-1298/8762
 015 snow/yellow
 025 snow/rose



A



B



C



D



E



F



G



H



I

FITS PERFECTLY TO SUMMER PIQUÉE

A. Bamboo p.292 — B. Signature p.312 — C. Streamline p.248 — D. Soaps p.314 — E. Streamline p.248
 F. Push p.282 — G. Streamline p.248 — H. Tube p.298 — I. Piquée p.88

As a manufacturing company, we are aware of our special responsibility with regard to people, nature and the environment. For this reason, we invest continuously and unceasingly in all areas of the company and in this way promote sustainability and environmental protection at our production site in Großschönau/ Oberlausitz (Upper Lusatia). Through technical innovations and technological improvements, we continually contribute to significantly reducing our energy and resource consumption. Our geographical situation and the production *Made in Germany* further ensure short and thus environmentally friendly transport routes.





SUSTAINABILITY IN OUR COLLECTIONS

The focus on sustainability to protect flora and fauna is part of our quality promise and is also reflected in our collections. The WELLBEING collection made of organic cotton and European linen and the ORGANIC collection made of GOTS-certified pure cotton are currently our trendsetters in terms of sustainability and environmental friendliness. Both collections are produced completely CO₂-neutral through the use of 100% solar energy and score with an ecologically tiny footprint.

In addition, all the yarns and ingredients we use are certified according to the OEKO-TEX Standard 100 Product Class 1. This means that all terry products - from wash mitts to bathrobes - are suitable for both sensitive skin as well as for allergy sufferers, babies and toddlers.

The naturally soft water from our own well used for production does not require the addition of chemicals for water softening; the rinse water is used several times. At the same time, by using our own resources, we save valuable drinking water that has undergone costly treatment.

We have already completely dispensed with plastic in the packaging of our organic collections and intend to do so for all articles. Another big step has already been taken with our bathrobes - by switching from hanging to folded, we have by now been able to do completely without plastic hangers in addition to reducing the plastic needed for protective packaging by 50%. Should the use of plastic nevertheless be unavoidable, the products used are PVC-free. For the hang-tags to label our goods, we make sure that they are made of FSC-certified paper.

ENERGY-SAVING MEASURES

By using our own combined heat and power plant and a photovoltaic solar system, we are able to generate one third of our energy requirements; for our weaving mill, we cover as much as 100% of the energy required. Our process optimisation to reduce energy and water consumption is ensured by an annual quality, environmental and energy programme by TÜV Rheinland; all environmental inputs of production are closely monitored and controlled and reduced whenever technologically possible. We are equally scrupulous in separating our waste and feeding it into the recycling loop through a certified company. In this way, any leftover textiles from production are given a new, meaningful purpose, for example, by being reused as insulating materials in the car industry or in the building trade.



MÖVE IS NOW CLIMATE NEUTRAL!

Despite all the measures already successfully implemented to reduce emissions in production, it is unfortunately not possible to avoid them completely. A special milestone for us is therefore achieving climate neutrality in autumn 2021. To compensate our annual emissions of CO₂ as determined by the company Climate Extender we have purchased certificates for international climate protection projects, that comply with the globally recognised VCS (Verified Carbon Standard) and the Gold Standard. In this way, we participate in voluntary emissions trading and, by reducing greenhouse gases, make a sustainable contribution to an environment worth living in and against global warming. The projects we support from the Climate Extender portfolio rely on the power of solar cells, wind and water and thus have a strong connection to MÖVE.

With these certificates, we offset the entire CO₂ emissions of our company - from the employees' commute to work, to freight, heating, electricity and vehicle fleet to paper consumption and indirect emissions in production. At the same time, our commitment supports important goals defined by the UN, such as clean water and sanitation, affordable and clean energy, decent work conditions and economic growth.

The „Climate Neutral Company“ label and the associated ID number DE-2478-0812 ensure transparency and traceability. It goes without saying that we will continue to work on steadily improving our CO₂-print and reducing all emissions to a minimum.

SUSTAINABILITY AT THE POS

We also embrace the theme of sustainability in our MÖVE stores and for some time now have been offering our customers only paper carrier bags. Even better for the environment and a good example of upcycling are our high-quality fabric bags. These are woven from the most diverse coloured yarn scraps that accumulate every day in our production and are far too good to throw away. Using 100% self-generated energy in the weaving mill, they are turned into environmentally friendly and sustainable fabric bags in two sizes. And because there are never the same leftover yarns, each bag is unique and truly one-of-a-kind! Whenever possible, the bags are shipped to the stores using a reusable transport system, thus saving on cardboard boxes - which are otherwise made of 100% recycled materials.

NATURE CONSERVATION AND UPCYCLING

Another area particularly close to our heart is that of nature and art projects. To be mentioned here are the planting of trees at regional level as well as the installation of nesting boxes in Upper Lusatia. With the JobRad option, we enable our employees to switch from car to bicycle easily and at low cost. By subsidising the purchase of a bicycle, we make it easy for our employees to do without their car on the way to work or in their free time and thus to keep fit.

With remnants from production on the other hand - linting from shearing and tumbling and edge trimmings from sewing - we support upcycling projects of universities and their students for experiments on resource conservation. This results in, for example, then attractive design objects which are even biodegradable because of their nature and the way they are made. In 2015, the Krupka/Stieghan duo was awarded the Brandenburg Design Prize for this.



CLASSIC COLLECTION

ELEMENTS

The young and sporty ELEMENTS collection in bright colours is simply indispensable for everyday use and is a winner with many beautiful features. It is made of durable cotton terry and is easy to care for - perfect for frequent use at home and on the go in the spa, sauna or gym.

The distinctive ribbed texture also provides a comforting and refreshing effect when washing and drying. The wide range of sizes - from washing gloves to sauna towels - leaves nothing to be desired and offers the right product for every occasion.



~ The young, fresh design comes in an impressive range of bright colours and sizes. The soft terry fabric with a striking ribbed texture is very pleasant on the skin.

→
ELEMENTS Plain
1-1240/8322
607 apple

SUPERWUSCHEL Bath mat
1-0300/8126
701 red clay





ELEMENTS Plain
1-1240/8322
 546 royal
 607 apple
 103 sun
 460 ocean
 106 orange
 256 ketchup
 001 snow
 843 graphite





ELEMENTS Plain
1-1240/8322
103 sun

ELEMENTS Plain
1-1240/8322
546 royal
607 apple
103 sun
460 ocean
106 orange
256 ketchup





- 607 apple
- 103 sun
- 106 orange
- 256 ketchup

ELEMENTS Plain

Art.-Nr.	Material	Size (cm)
1-1240/8322	Plain ribbed, 100% cotton, 500 gsm	15 x 20
		30 x 50
		50 x 100
		67 x 140
		80 x 180



- 460 ocean
- 546 royal
- 001 snow
- 843 graphite



Elements Plain
1-1240/8322
diverse Farben



A



B



C



D



E



F



G



H



I

FITS PERFECTLY TO ELEMENTS

A. Tube p.298 — B. Superwuschel p.120 — C. Signature p.312 — D. Signature p.312 — E. Teak p.256
F. Line p.252 — G. Line p.252 — H. Soaps p.314 — I. Teak p.256

CLASSIC COLLECTION

BAMBOO LUXE

Ultra-soft and delicately shiny, extra absorbent and with a luxurious weight - this sums up our exquisite and timeless BAMBOO LUXE collection. The high-quality smalls, hand towels and shower towels are made of cotton and viscose from bamboo cellulose and exploit the natural antibacterial properties of the bamboo fibre. At the same time, the cotton content makes the towels extremely hard-wearing.

The attractive pearl texture, the wide sheared velour border and the rich colours also make the collection something very special and transform every bathroom into a luxurious wellness oasis.



~ The classy and timeless collection in a luxurious look has a strikingly attractive pearl texture and a wide sheared velour border. The extra heavy quality is made of cotton and viscose from bamboo cellulose.

→
BAMBOO LUXE Plain
1-1104/5244
017 ivory





BAMBOO LUXE Plain
1-1104/5244
017 ivory

→
BAMBOO LUXE Plain
1-1104/5204
658 peridot
266 berry





→
BAMBOO LUXE Plain
1-1104/5244
596 deep sea



←
BAMBOO LUXE Plain
1-1104/5244
596 deep sea
017 ivory
658 peridot
386 deep lake





658 peridot
850 stone
199 black



460 ocean
001 snow
386 deep lake
596 deep sea



266 berry
823 silver grey
017 ivory

BAMBOO LUXE Plain

Art.-Nr.	Material	Size (cm)
1-1104/5244	Plain with velour border, 60% cotton, 40% viscose from bamboo cellulose, 630 gsm	15 x 20 30 x 30 30 x 50 50 x 100 80 x 150



199 black



001 snow



596 deep sea



386 deep lake



017 ivory



460 ocean

~~~~~ The soft bathmat in three different sizes is colour-coordinated with the towel series. Beautiful details include the wide trim around the edges and the embroidered tone-on-tone MÖVE Signet.



658 peridot



266 berry



823 silver grey



850 stone

## BASIC Bath mat

| Art.-Nr.    | Material                                                | Size (cm)                       |
|-------------|---------------------------------------------------------|---------------------------------|
| 1-0300/8126 | Bath mat with embroidered logo<br>100% cotton, 1350 gsm | 60 x 60<br>60 x 100<br>60 x 130 |





BLACK VELVET soap dispenser  
4-4282  
S. 280



A



B



C



D



E



F



G



H



I

FITS PERFECTLY TO BAMBOO LUXE

A. Velvet <sup>p.284</sup> — B. Bamboo Luxe <sup>p.72</sup> — C. Bamboo <sup>p.292</sup> — D. Soaps <sup>p.314</sup> — E. Velvet <sup>p.284</sup>  
F. Tube <sup>p.298</sup> — G. Black Velvet <sup>p.268</sup> — H. Signature <sup>p.312</sup> — I. Homewear <sup>p.150</sup>



CLASSIC COLLECTION

# PIQUÉE

The Mediterranean classic has become a staple even in our part of the world and scores points with its timeless look and extraordinary feel. A special weaving technique creates a light fabric without loops, but with a distinctive relief structure.

The products in the PIQUÉE collection are extremely skin-friendly, can absorb a lot of moisture and dry quickly. The textured surface also creates a light massage effect when drying off. The discreet grey label provides the perfect finishing touch and gives the collection its distinctive look.





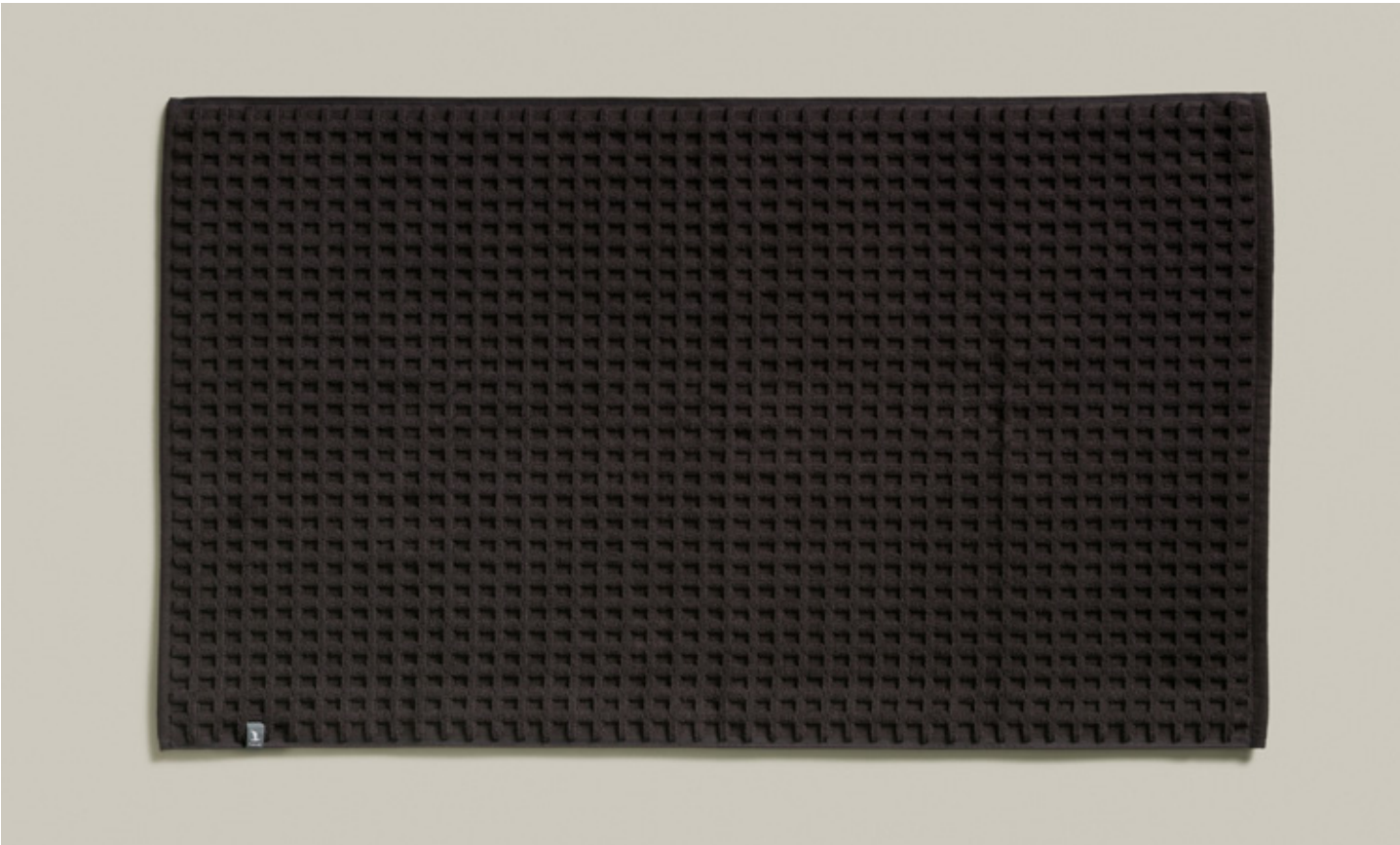
→  
**PIQUÉE Waffle piquée**  
**1-0605/8762**  
677 sea gras  
001 snow

~ A special weaving technique gives this light bathmat its characteristic waffle structure, which can absorb a lot of water and at the same time dries quickly again.

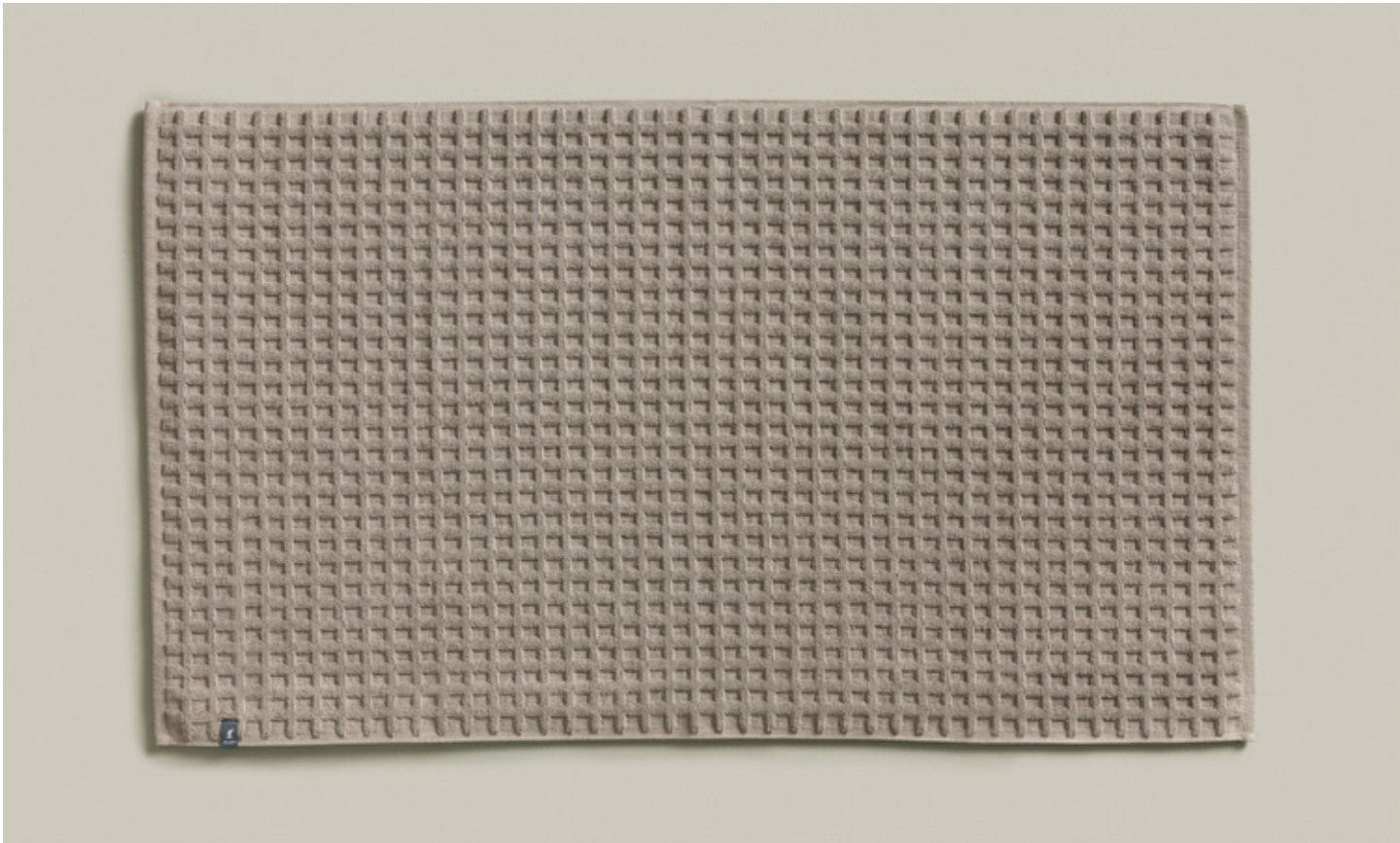
→  
**PIQUÉE Bath mat**  
**1-0798/8127**  
677 sea grass



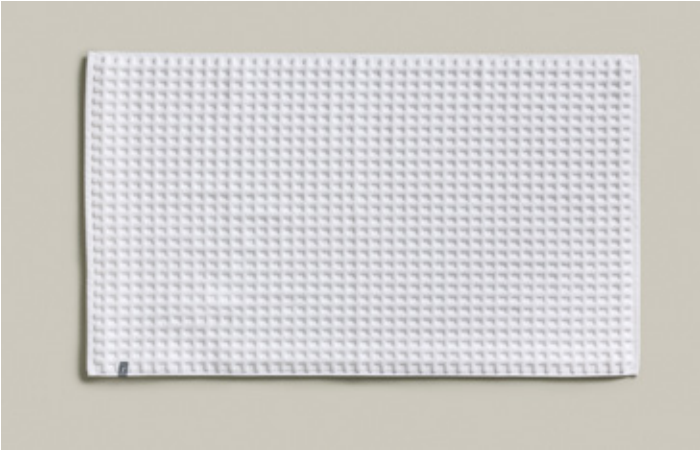




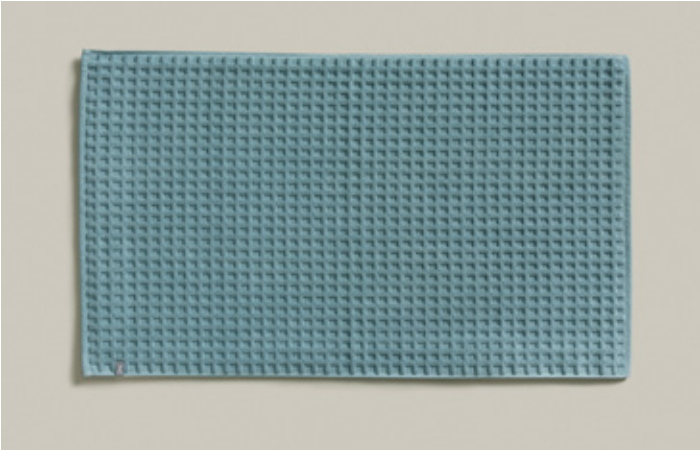
843 graphite



713 cashmere



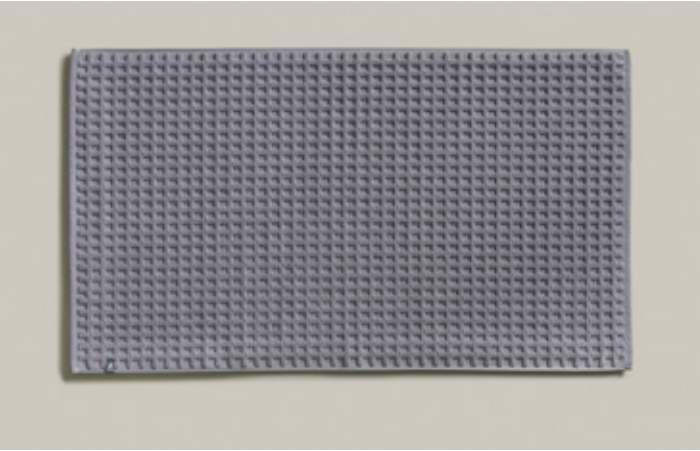
001 snow



530 artic



677 sea grass



845 granite

PIQUÉE Bath mat

| Art.-Nr.    | Material                                                | Size (cm)                       |
|-------------|---------------------------------------------------------|---------------------------------|
| 1-0798/8127 | Bath mat with waffle structure<br>100% cotton, 1415 gsm | 60 x 60<br>60 x 100<br>60 x 130 |





677 sea grass  
530 arctic  
001 snow

PIQUÉE Waffle piquée

| Art.-Nr.    | Material                              | Size (cm)                       |
|-------------|---------------------------------------|---------------------------------|
| 1-0605/8762 | Waffle piquée<br>100% cotton, 350 gsm | 40 x 70<br>50 x 100<br>70 x 140 |



PIQUÉE Waffle piquée  
1-0605/8762  
845 granite





↑  
**PIQUÉE Hooded bathrobe**  
**2-7650/0175**  
001 snow  
  
**PIQUÉE Waffle piquée**  
**1-0605/8762**  
713 cashmere

~ The range of towels in a special weaving technique is summery-light and quick-drying. The characteristic honeycomb structure can absorb a lot of moisture and stimulates the blood circulation of the skin when drying.



**845** granite  
**713** cashmere  
**842** graphite

PIQUÉE Waffle piquée

| Art.-Nr.           | Material                              | Size (cm)                       |
|--------------------|---------------------------------------|---------------------------------|
| <b>1-0605/8762</b> | Waffle piquée<br>100% cotton, 350 gsm | 40 x 70<br>50 x 100<br>70 x 140 |





001 snow



842 graphite

## PIQUÉE Hooded bathrobe

| Art.-Nr.    | Material                                                     | Size              |
|-------------|--------------------------------------------------------------|-------------------|
| 2-7650/0175 | Hooded bathrobe, waffle piquée<br>100% cotton, length 120 cm | S<br>M<br>L<br>XL |

~ The summery unisex hooded robe was produced using a special weaving technique. This creates the characteristic relief structure, which makes it feel good and extra soft on the skin.





PIQUÉE Waffle piquée  
1-0605/8762  
diverse Farben

BAMBOO Laundry basket  
Seite 304



A



B



C



D



E



F



G



H



I

FITS PERFECTLY TO PIQUÉE

A. Mirrors <sup>p.286</sup> — B. Teak <sup>p.256</sup> — C. Essentials <sup>p.310</sup> — D. Essentials <sup>p.310</sup> — E. Piquée <sup>p.88</sup>  
F. Bamboo <sup>p.292</sup> — G. Push <sup>p.282</sup> — H. Piquée <sup>p.88</sup> — I. Teak <sup>p.256</sup>



# LOFT

Voluminous and velvety, noble and luxurious - this sums up the LOFT collection made from the unique cotton fibre Spinair. A hollow space inside the yarn ensures outstanding softness and volume paired with high moisture absorption and a fast drying time.

The high-quality border of chenille tucks contrasts beautifully with the soft terry loops and provides the perfect finish on towels and small items. The pastel colour palette is another key feature of this exceptional collection that will instantly turn any bathroom into an oasis of well-being.







←  
LOFT Plain  
0-5420/8708  
001 snow



→  
LOFT Plain  
0-5420/8708  
290 rose





- 711 celladon
- 708 wood
- 290 rose
- 714 papyrus

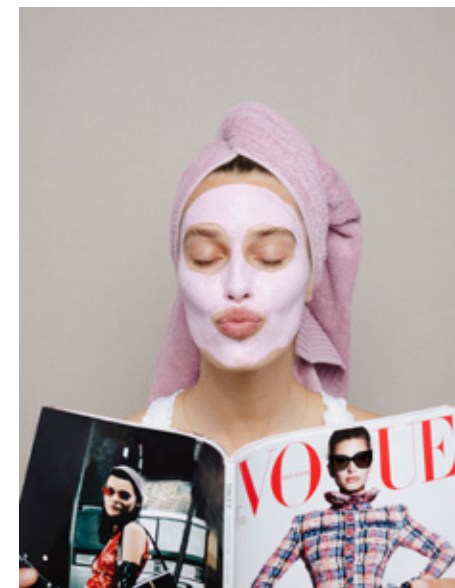
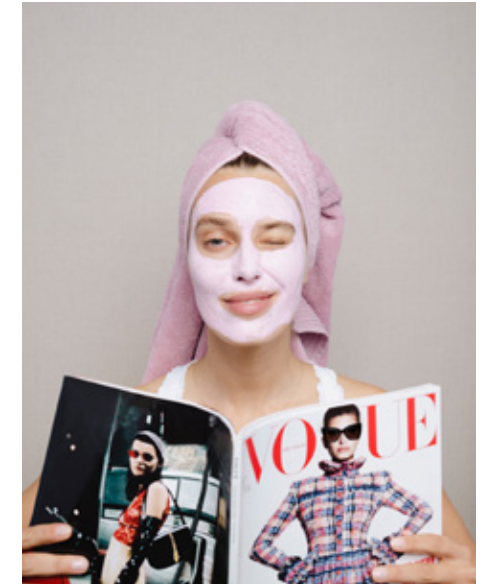
# LOFT Plain

| Art.-Nr.    | Material                                                    | Size (cm) |
|-------------|-------------------------------------------------------------|-----------|
| 0-5420/8708 | Plain with chenille tucks<br>100% cotton (Spinair), 550 gsm | 15 x 20   |
|             |                                                             | 30 x 30   |
|             |                                                             | 30 x 50   |
|             |                                                             | 50 x 100  |
|             |                                                             | 80 x 150  |

→  
LOFT Plain  
0-5420/8708  
127 silverstone







LOFT Plain  
0-5420/8708  
diverse Farben





LOFT Plain  
0-5420/8708  
127 silverstone

~ The luxurious and elegant collection is made of the special yarn fibre Spinair. This makes it extra soft and velvety and gives it plenty of volume. The hem is embellished with a high-quality piped border in chenille.



- 530 arctic
- 001 snow
- 127 silverstone
- 843 graphite

## LOFT Plain

| Art.-Nr.    | Material                                                    | Size (cm)                                             |
|-------------|-------------------------------------------------------------|-------------------------------------------------------|
| 0-5420/8708 | Plain with chenille tucks<br>100% cotton (Spinair), 550 gsm | 15 x 20<br>30 x 30<br>30 x 50<br>50 x 100<br>80 x 150 |





001 snow



530 arctic



708 wood



290 rose



711 celadon



714 papyrus



127 silverstone



843 graphite

~ The high-quality bathmat is unusually lush thanks to the tufting technique and scores with its striking double face look. On one side, the pile consists of cut loops, while on the other voluminous side it consists of closed loops.

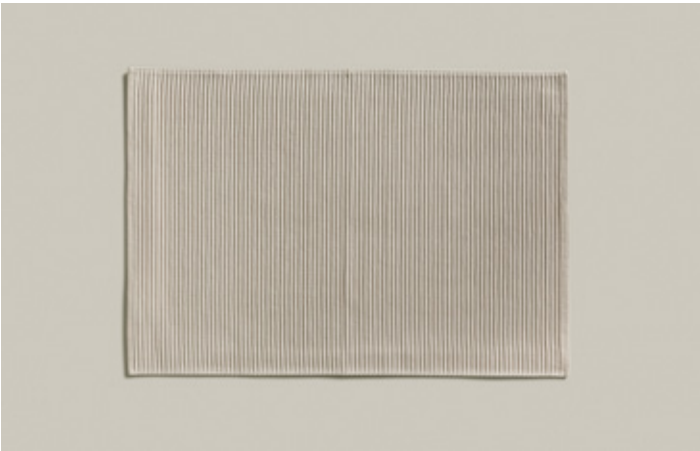
## LOFT Tufted bath mat

| Art.-Nr. | Material                                             | Size (cm) |
|----------|------------------------------------------------------|-----------|
| 4-2169   | Tufted bath mat, doubleface<br>100% cotton, 2000 gsm | 60 x 100  |



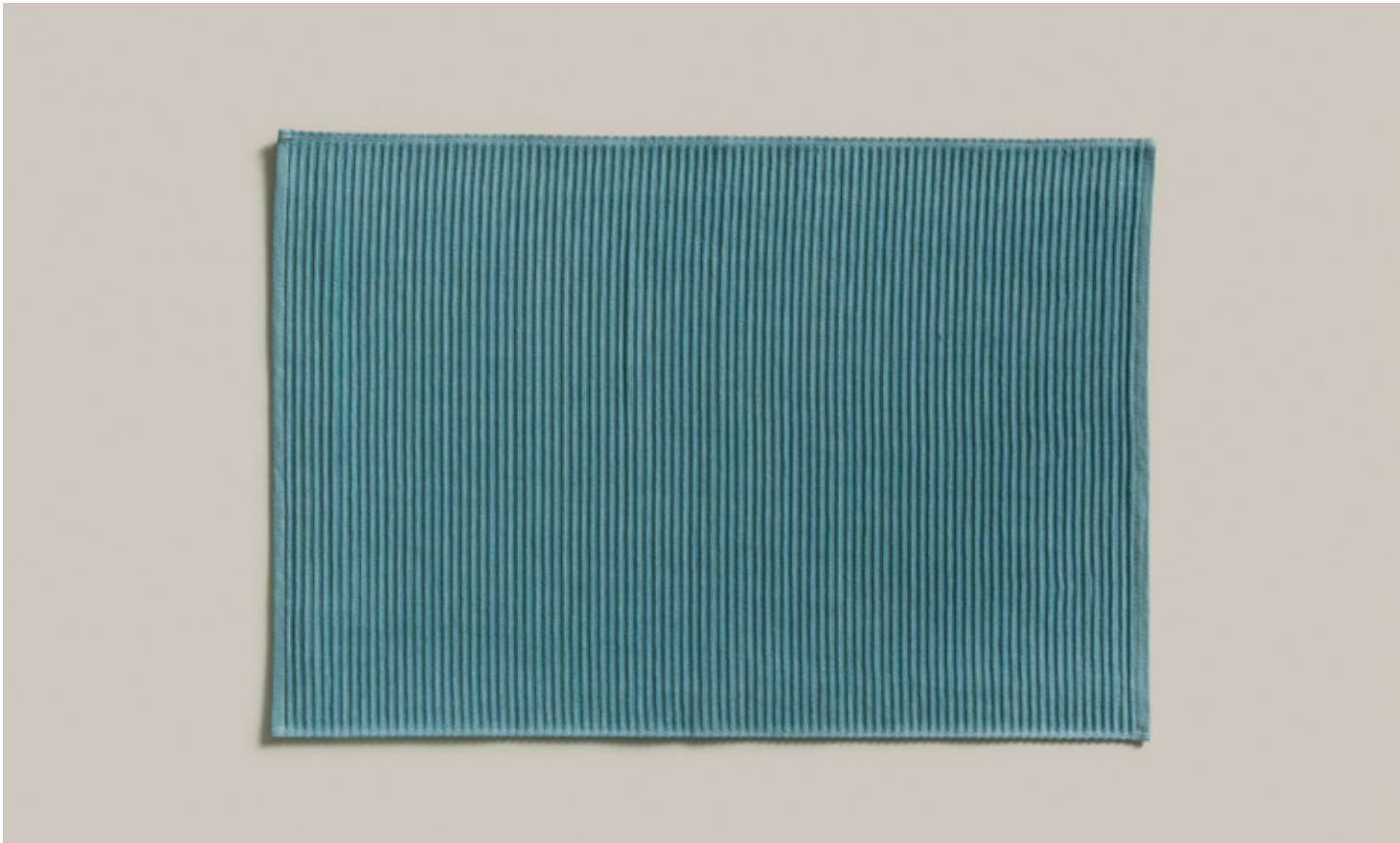


001 snow

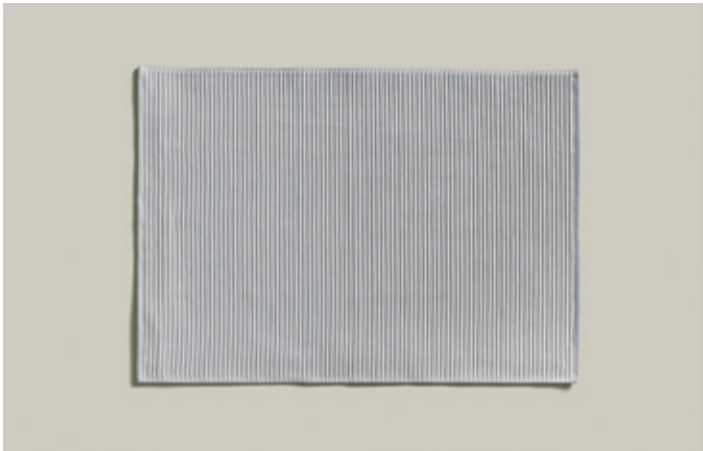


714 papyrus

~ This attractive bathmat is small but stylish, and its size makes it particularly suitable for smaller bathrooms with less space. The eye-catching all-over woven chenille tucks give it an attractive look and a pleasant feel.



530 arctic



127 silverstone



843 graphite

## LOFT Bath mat

| Art.-Nr.    | Material                                             | Size (cm) |
|-------------|------------------------------------------------------|-----------|
| 1-1099/7202 | Bath mat with chenille tucks<br>100% cotton, 710 gsm | 50 x 80   |



The high-tech Spinair fibre ensures that the luxurious unisex kimono is particularly voluminous, soft and cosy. The stylish trim is made of high-quality chenille tucks.



530    arctic<sup>1</sup>



843    graphite<sup>2</sup>

## LOFT Kimono

| Art.-Nr.    | Material                                                | Size |
|-------------|---------------------------------------------------------|------|
| 2-7839/0551 | Kimono<br>100% cotton (Spinair), length 120 cm, 380 gsm | XS   |
|             |                                                         | S    |
|             |                                                         | M    |
|             |                                                         | L    |
|             |                                                         | XL   |
|             | <sup>1</sup> available in XS – XL                       | XXL  |
|             | <sup>2</sup> available in S – XXL                       |      |





LOFT Plain  
0-5420/8708  
530 arctic



A



B



C



D



E



F



G



H



I

FITS PERFECTLY TO LOFT

A. Wood p.302 — B. Loft p.102 — C. Mirrors p.286 — D. Homewear p.150 — E. Teak p.256  
F. Apothecary p.308 — G. Teak p.256 — H. Bamboo p.292 — I. Soaps p.314



# SUPER WUSCHEL

Our most popular and best-known collection is SUPERWUSCHEL. In our range for over 40 years, it has been constantly developed and is now a classic with cult status. We only use specially selected velvety soft premium cotton for the production and refine it in the manufacturing process to create a uniquely fluffy result - extra soft to the touch, with lots of volume and a high dense pile.

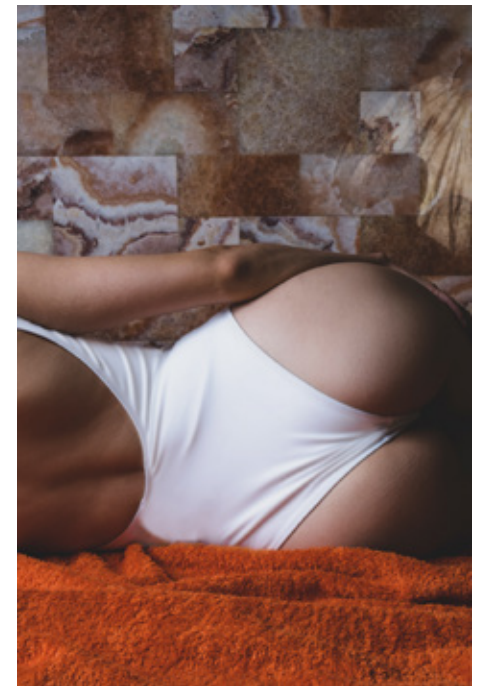
The distinctive 5-row piping border and the embroidered tone-on-tone MÖVE signet are timeless and characteristic details and unmistakable features. The collection impresses with a wide range of colours and is available from wash gloves to sauna towels.







→  
**SUPERWUSCHEL Plain**  
**0-1725/8775**  
701 red clay



~ The extra-soft basic collection is available in many different colours and sizes. The characteristic piping and the embroidered MÖVE signet are the hallmark of the series.





701 red clay  
115 gold  
075 ruby



577 aquamarine  
410 cornflower  
596 deep sea



761 burgundy  
829 silver  
820 dark grey



713 cashmere  
017 ivory  
731 java brown

SUPERWUSCHEL Plain

| Art.-Nr.    | Material                                                                 | Size (cm) |
|-------------|--------------------------------------------------------------------------|-----------|
| 0-1725/8775 | Plain with embroidered logo (from size 30 x 50 cm), 100% cotton, 550 gsm | 15 x 20   |
|             |                                                                          | 30 x 30   |
|             |                                                                          | 30 x 50   |
|             |                                                                          | 50 x 100  |
|             |                                                                          | 60 x 110  |
|             |                                                                          | 80 x 150  |
|             |                                                                          | 100 x 160 |





850 stone  
001 snow  
199 black



194 turquoise  
658 peridot  
458 lagoon

SUPERWUSCHEL Plain

| Art.-Nr.    | Material                                                                 | Size (cm) |
|-------------|--------------------------------------------------------------------------|-----------|
| 0-1725/8775 | Plain with embroidered logo (from size 30 x 50 cm), 100% cotton, 550 gsm | 15 x 20   |
|             |                                                                          | 30 x 30   |
|             |                                                                          | 30 x 50   |
|             |                                                                          | 50 x 100  |
|             |                                                                          | 60 x 110  |
|             |                                                                          | 80 x 150  |
|             |                                                                          | 100 x 160 |

↓  
SUPERWUSCHEL Plain  
0-1725/8775  
658 peridot  
701 red clay







- 713 cashmere
- 017 ivory
- 850 stone
- 820 dark grey

~ The fluffy sauna towels in timeless colours are particularly absorbent, hard-wearing and easy-care. Striking details include the characteristic piped border and the embroidered MÖVE signet.



- 458 lagoon
- 001 snow
- 075 ruby
- 596 deep sea

## SUPERWUSCHEL Sauna towel

| Art.-Nr.    | Material                                                  | Size (cm) |
|-------------|-----------------------------------------------------------|-----------|
| 0-1725/8775 | Sauna towel with embroidered logo<br>100% cotton, 550 gsm | 80 x 200  |





**SUPERWUSCHEL Plain**  
**0-1725/8775**  
 658 peridot  
 458 lagoon



**SUPERWUSCHEL Plain**  
**0-1725/8775**  
 458 lagoon  
 658 peridot  
 115 gold







001 snow<sup>1</sup>



075 ruby<sup>2</sup>



596 deep sea<sup>3</sup>



850 stone<sup>3</sup>

## SUPERWUSCHEL Hooded bathrobe

| Art.-Nr.    | Material                                               | Size |
|-------------|--------------------------------------------------------|------|
| 2-7079/0661 | Hooded bathrobe<br>100% cotton, length 120 cm, 380 gsm | XS   |
|             |                                                        | S    |
|             |                                                        | M    |
|             |                                                        | L    |
|             |                                                        | XL   |
|             | <sup>1</sup> is available in XS – XXL                  | XXL  |
|             | <sup>2</sup> is available in XS – XL                   |      |
|             | <sup>3</sup> is available in S – XXL                   |      |

~~~~~ The attractive unisex hooded bathrobe in timeless colours is cosy and soft and is a winner with its classic, simple design. The highly absorbent material is easy-care and hard-wearing.




713 cashmere



194 turquoise



199 black



017 ivory



410 cornflower



458 lagoon



577 aquamarine

~ The soft bathmat in three different sizes is colour-coordinated with the towel series and also matches many other collections. Beautiful details include the wide trim around the edges and the embroidered tone-on-tone signet.



596 deep sea



658 peridot



701 red clay



731 java brown



761 burgundy



820 dark grey



829 silver



850 stone



075 ruby



001 snow



115 gold

SUPERWUSCHEL Bath mat

| Art.-Nr. | Material | Size (cm) |
|-------------|---|---------------------------------|
| 1-0300/8126 | Bath mat with embroidered logo
100% cotton, 1350 gsm | 60 x 60
60 x 100
60 x 130 |



820 dark grey



829 silver



761 burgundy



731 java brown



458 lagoon



410 cornflower



199 black

The practical shower mat is available in many attractive colours and impresses with its minimalist design. Due to its appealing size, it is particularly suitable for smaller bathrooms.



017 ivory



850 stone



713 cashmere



658 peridot



596 deep sea



194 turquoise



075 ruby



001 snow

SUPERWUSCHEL Shower rug

| Art.-Nr. | Material | Size (cm) |
|-------------|---|-----------|
| 0-2831/8022 | Shower rug with woven in logo
100% cotton, 700 gsm | 50 x 70 |



Superwuschel Plain
0-1725/8775
458 lagoon
658 peridot



A



B



C



D



E



F



G



H



I

FITS PERFECTLY TO SUPERWUSCHEL

A. Stand ^{p.280} — B. New Orbit ^{p.272} — C. Superwuschel ^{p.120} — D. Bamboo ^{p.292} — E. Homewear ^{p.150}
F. Essentials ^{p.310} — G. Soaps ^{p.314} — H. Apothecary ^{p.308} — I. New Orbit ^{p.272}

BROOKLYN

Inspired by traditional suit fabrics and skilfully interpreted on terry - this sums up BROOKLYN. Classic glencheck and herringbone have been masterfully and modernly implemented on hand and shower towels; a matching plain towel with a wide herringbone border perfectly complements the patterns.

And nothing was left to chance in the choice of material: the use of bouclé yarn with differing thicknesses gives each of these expressive designs a charm all of its own. Skin-friendly cotton makes the towels hard-wearing, soft and easy-care, while viscose provides a delicate sheen and linen a special feel.





081 nature/black
071 nature/cashmere

BROOKLYN Herringbone

| Art.-Nr. | Material | Size (cm) |
|-------------|---|----------------------|
| 1-0567/8970 | Herringbone with looped hem
85% cotton, 10% viscose, 5% linen, 600 gsm | 50 x 100
80 x 150 |



~ The high-quality hand and shower towels impress with their herringbone pattern and the wide folded hem in chequerboard look. The special look and the luxurious weight are due to the special material mix.



BROOKLYN Glencheck
1-0569/8970
081 nature/black



081 nature/black
071 nature/cashmere



~ The attractive hand and shower towels in a glencheck pattern will win you over with their appealing design and the wide folded hem in a chequered look. The bouclé yarn used gives the collection its luxurious weight.

BROOKLYN Glencheck

| Art.-Nr. | Material | Size (cm) |
|-------------|---|----------------------|
| 1-0569/8970 | Glencheck with looped hem
85% cotton, 10% viscose, 5% linen, 600 gsm | 50 x 100
80 x 150 |

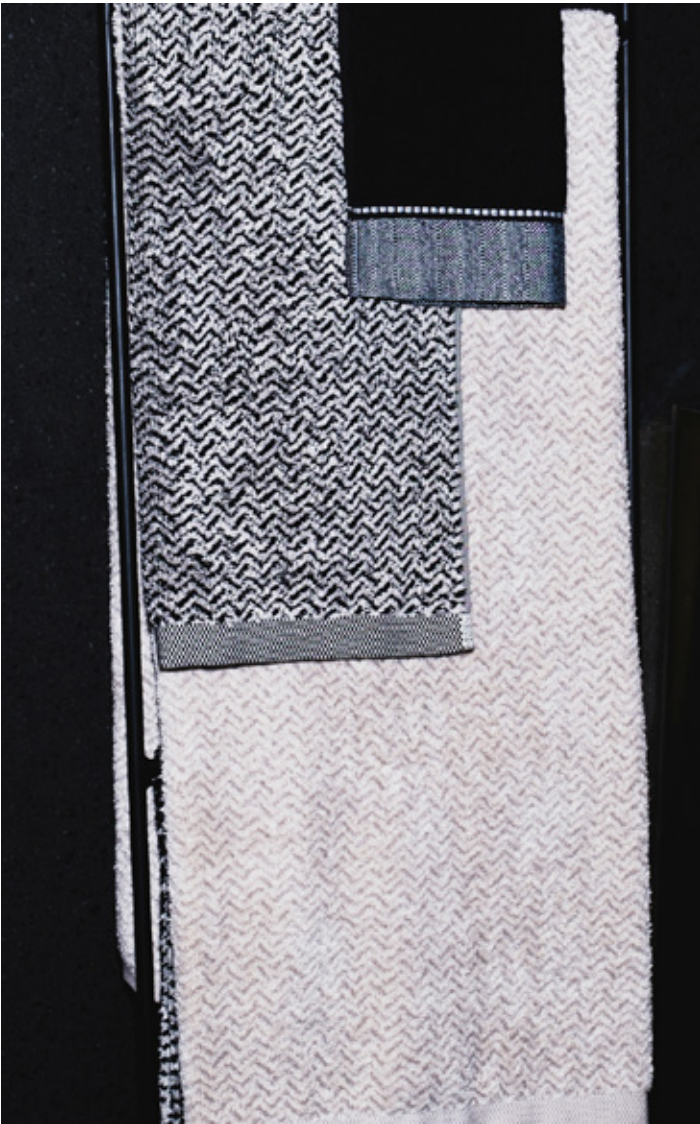


199 black
713 cashmere

BROOKLYN Plain

| Art.-Nr. | Material | Size (cm) |
|-------------|---|-----------|
| 1-0669/8970 | Plain with broad herringbone border
85% cotton, 10% viscose, 5% linen, 600 gsm | 15 x 20 |
| | | 30 x 30 |
| | | 30 x 50 |
| | | 50 x 100 |
| | | 80 x 150 |

~ The elegant plain dyes in different sizes perfectly complement the patterned hand and shower towels. The wide folded border has an eye-catching herringbone pattern. The collection is made of a special material mix.





BROOKLYN Glencheck
1-0569/8970
081 nature/black



A



B



C



D



E



F



G



H



I

FITS PERFECTLY TO BROOKLYN

- A. Push p.282 — B. Black and White p.264 — C. Bamboo p.292 — D. Homewear p.150
E. Superwuschel p.120 — F. Black and White p.264 — G. Black and White p.264
H. Velvet p.284 — I. Homewear p.150

HOMWEAR

What would a beautiful day at home be without the right accessories? Our HOMWEAR collection is designed to meet these needs and provide cosiness and comfort. The elegant dressing gowns are made of a shirting fabric from a Swiss manufacturer - some of them exclusively for MÖVE - and are a winner with their appealing design and high-quality workmanship.

Lightweight robes in terry or piquée make a pleasant alternative and are also suitable for travelling; a shawl collar robe in velour and a knee-length hooded robe are perfect for snuggling up in. A fluffy turban and terry slippers round off the HOMWEAR collection.





001 snow¹



075 ruby¹



596 deep sea²



843 graphite²

HOMEWEAR Kimono Waffle piquée

| Art.-Nr. | Material | Size |
|-------------|--|------|
| 2-7612/0663 | Kimono, waffle piquée
100% cotton, length 110 cm, 200 gsm | S |
| | | M |
| | | L |
| | | XL |
| | | XXL |
| | ¹ are available in S – XXL | XXL |
| | ² are available in S – XXXL | XXXL |

~ The light kimono made of waffle piquée is not only extremely comfortable, but also feels pleasantly soft on the skin. Thanks to its light weight, it can be easily stowed away to save space and is the perfect travel companion.



~ This stylish dressing gown made of fine flannel is cuddly and wonderfully soft. The high-quality finish and stylish details such as patch pockets and dark contrasting piping make it an attractive and time-less classic.

081 grey

HOMEWEAR Dressing gown

| Art.-Nr. | Material | Size (cm) |
|-------------|--|-----------|
| 2-7872/0057 | Light weight dressing gown, flannel, 100% cotton, length 120 cm, 150 gsm | 48 |
| | | 50 |
| | | 52 |
| | | 54 |
| | | 56 |



~ The light hooded bathrobe made of cuddly soft terry towelling is particularly comfortable thanks to its airy cut and the large hood. The noble edging made of high-quality satin gives it that certain something and makes it a real eye-catcher.

829 silver

HOMEWEAR Hooded bathrobe

| Art.-Nr. | Material | Size (cm) |
|-------------|---|-----------|
| 2-7686/0521 | Light weight hooded bathrobe with piping
100% cotton, length 115 cm, 295 gsm | 36 |
| | | 38 |
| | | 40 |
| | | 42 |



081 grey

HOMEWEAR Dressing gown

| Art.-Nr. | Material | Size |
|-------------|---|------|
| 2-7916/0058 | Light weight dressing gown with terry lining
100% cotton, length 120 cm, 260 gsm | S |
| | | M |
| | | L |
| | | XL |
| | | |

~ The stylish dressing gown is a winner with its striking tie pattern and the contrast between the smooth outer fabric and the soft cotton terry, which is also evident on the shawl collar and cuffs. The patch pockets and tie belt are practical details.



081 black

HOMEWEAR Dressing gown

| Art.-Nr. | Material | Size |
|-------------|---|------|
| 2-7915/0058 | Light weight dressing gown with terry lining
100% cotton, length 120 cm, 260 gsm | S |
| | | M |
| | | L |
| | | XL |
| | | |

~ The outer fabric of the elegant dressing gown has an impressive colourful woven check box structure; inside, the soft cotton terry towelling, which also appears on the shawl collar and cuffs, provides warmth. Practical details include the patch pockets and tie belt.



761 burgundy



830 moonlight



843 graphite

HOMEWEAR Hooded Bathrobe

| Art.-Nr. | Material | Size (cm) |
|-------------|--|-----------|
| 2-7933/0563 | Hooded bathrobe, short
100% cotton, length 95 cm, 380 gsm | 36 |
| | | 38 |
| | | 40 |
| | | 42 |

~ The cosy knee-length bathrobe is a pleasant alternative for the warmer season and generally for all those who like it a little shorter. Attractive and practical details include the comfortable hood, the side pockets and the tie belt.



017 ivory¹



199 black²



823 silver grey³



761 burgundy⁴

HOMEWEAR Shawl collar bathrobe

| Art.-Nr. | Material | Size |
|-------------|--|------|
| 2-7202/0925 | Shawl collar bathrobe, 100% cotton velours
length 125 cm, 420 gsm | XS |
| | | S |
| | | M |
| | | L |
| | | XL |
| | ¹ available in XS – XL | XXL |
| | ² available in S – XXXL | XXXL |
| | ³ available in XS – XXXL | |
| | ⁴ available in S – XXL | |

~ The cuddly soft shawl collar bathrobe made of high-quality velour is both comfortable and sophisticated. The elegant style is further emphasised by lovely details such as the fine piping and the embroidered MÖVE signet on the sleeve.



001 snow



199 black

HOMEWEAR Slipper

| Art.-Nr. | Material | Size |
|-------------|-------------------------|--------------------------|
| 2-7340/7563 | Slippers
100% cotton | P2 (39-41)
P3 (42-44) |

~ The lightweight, timeless slippers are comfortable and cosy, but elegant at the same time. The soft terry ensures warm feet; the practical pimple sole ensures a secure grip on the floor. The light weight also makes the slippers perfect for on the go.



001 snow



199 black

HOMEWEAR Turban

| Art.-Nr. | Material | Size (cm) |
|-------------|-----------------------|-----------|
| 2-7339/7563 | Turban
100% cotton | 27 x 67 |

~ The stylish yet extremely practical turban is made of particularly absorbent and quick-drying terry - making it a perfect choice for hair care. The practical button fastener at the neck is easy to close and prevents it from slipping.

WELLBEING

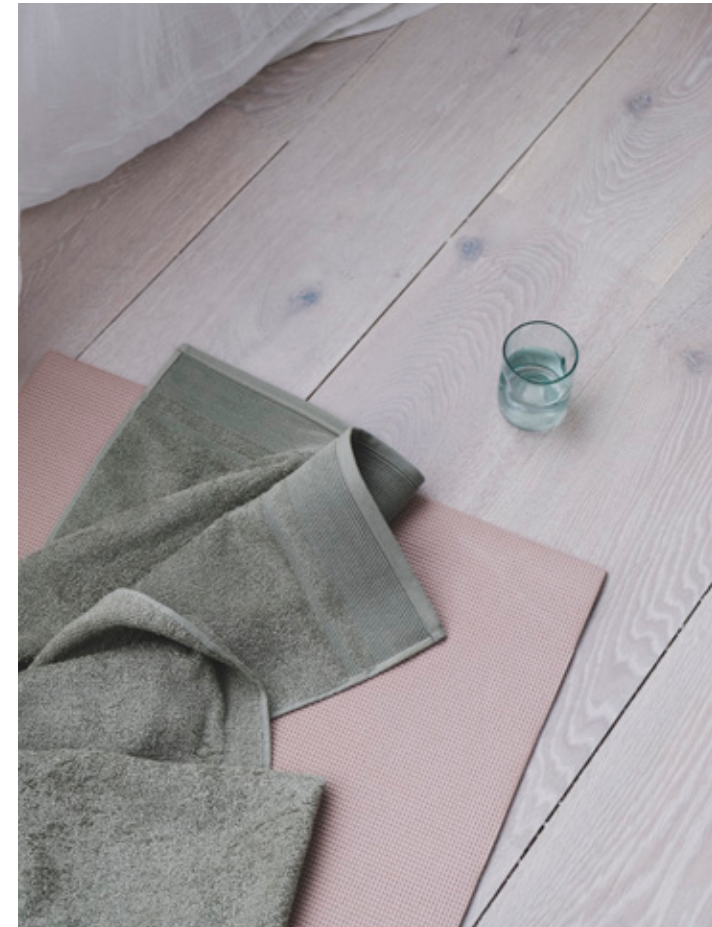
Simply better for the environment: our absorbent and quick-drying WELLBEING collection in various designs is made from sustainably grown organic cotton and European linen. By using 100% solar energy, the skin-friendly terry towelling quality is also produced in a completely CO₂-neutral and resource-friendly way.

This means sustainable products that simply look good and are in harmony with nature. The timeless design and harmonious colour palette are further attractive features of the stylish collection, while the pleasantly pithy feel ensures further lovely moments of well-being when drying off.





~ The particularly sustainable towel series impresses with its attractive pearl texture and wide tucked border. A variety of colours and sizes is available. The collection is manufactured in a CO₂ - neutral way from organic cotton and linen from European cultivation.



Pearl structure
1-1142/8316
690 moss

←
Pearl structure
1-1142/8316
994 off white
869 nature
713 cashmere

Wave structure
1-1145/8318
869 nature
994 off white

~ The hand and shower towels from particularly sustainable production are a winner with their discreet wavy structure and the high-quality folded hem. The collection is made from organic cotton and linen from European cultivation.

- Hooded bathrobe
2-7879/0557
869 nature
- Pearl structure
1-1142/8316
994 offwhite
- LOFT Bath mat
4-2169
829 silver





326 lavender
994 off white
280 rosette
690 moss



869 nature
713 cashmere
677 sea grass
843 graphite

WELLBEING Wave structure

| Art.-Nr. | Material | Size (cm) |
|-------------|--|----------------------|
| 1-1145/8318 | Wave structure with looped hem
85% organic cotton, 15% linen, 550 gsm | 50 x 100
67 x 140 |



869 nature
713 cashmere
677 sea grass
843 graphite



326 lavender
994 off white
280 rosette
690 moss

WELLBEING Pear1 structure

| Art.-Nr. | Material | Size (cm) |
|-------------|--|-----------|
| 1-1142/8316 | Pearl structure with tucks
85% organic cotton, 15% linen, 530 gsm | 15 x 20 |
| | | 30 x 30 |
| | | 30 x 50 |
| | | 50 x 100 |
| | | 67 x 140 |
| | | 80 x 200 |



LOFT Bath mat
4-2169
829 silver

~ The calf-length hooded robe with an attractive ribbed structure scores with its casual cut and cosy hood. The side pockets and tie belt are both practical and decorative. Made from organic cotton and linen from European cultivation.



←
WELLBEING
Hooded bathrobe
2-7879/0557
869 nature



843 graphite



869 nature

WELLBEING Hooded bathrobe

| Art.-Nr. | Material | Size |
|--------------------|---|------|
| 2-7879/0557 | Hooded bathrobe, ribbed structure
85% organic cotton, 15% linen, length 135 cm,
400 gsm | XS |
| | | S |
| | | M |
| | | L |
| | | XL |
| | | XXL |



Hooded bathrobe
2-7879/0557
869 nature

- ←
Pearl structure
1-1142/8316
 280 rosette
 326 lavender
 869 nature
 690 moss
 994 off white
 677 sea grass



677 sea grass

WELLBEING Kimono

| Art.-Nr. | Material | Size |
|-------------|---|------|
| 2-7908/0575 | Kimono
85% organic cotton, 15% linen, length 120 cm, 385 gsm | S |
| | | M |
| | | L |
| | | XL |

~ Produced in harmony with nature, this kimono invites you to snuggle up and relax. Practical details include the patch pockets and tie belt. The material used is organic cotton and linen from European cultivation.



~ This attractive kilt with patch pocket is produced in a particularly resource-friendly way and is the ideal companion in the sauna. The size is adjusted via practical press studs. The kilt is made from organic cotton and linen from European cultivation.

The practical sarong with patch pocket is perfect for a relaxing day at the spa. The size is easy to adjust via the press studs. The sarong is made from organic cotton and linen from European cultivation.



677 sea grass



677 sea grass

WELLBEING Sarong & Kilt

| Art.-Nr. | Material | Size |
|-------------|---|-------|
| 2-7910/0575 | Sarong
85% organic cotton, 15% linen,
length 60 cm, 385 gsm | 40/48 |
| 2-7909/0575 | Kilt
85% organic cotton, 15% linen,
length 60 cm, 385 gsm | 48/56 |



A



C



B



D



E

FITS PERFECTLY TO WELLBEING

A. Teak p.256 — B. Wellbeing p.306 — C. Mirrors p.286 — D. Wellness p.186 — E. Teak p.256

WELLNESS

One of our cosiest and most luxurious collections with many fine qualities is WELLNESS. A hollow space inside the cotton fibre used - Spinair - gives the products their elegant look and noticeably soft feel. At the same time, they can absorb a lot of water, dry quickly and are hard-wearing and durable.

In other words, the best attributes for a collection that is the perfect companion both in the bathroom at home and on the go in the spa or sauna. Stylish details such as high-quality chenille borders and the discreet alcantara label round off the collection.





WELLNESS Plain
0-5537/8711
071 nature

WELLNESS Shower rug
4-2279
071 nature

~ The extra fluffy terry collection is made from the modern cotton fibre Spinair with many valuable properties. A matching chenille border and a discreet alcantara label complete the look.





071 nature

WELLNESS Plain

| Art.-Nr. | Material | Size (cm) |
|-------------|---|-----------|
| 0-5537/8711 | Plain with chenille tucks
100% cotton (Spinair), 510 gsm | 15 x 20 |
| | | 30 x 30 |
| | | 30 x 50 |
| | | 50 x 100 |
| | | 80 x 150 |
| | | 80 x 200 |





071 nature

~ A bathmat could hardly be fluffier. The numerous soft loops and the high, dense pile give it its pleasant feel and luxurious look. The high-quality, heavy fabric is made from cotton and linen.

WELLNESS Bath mat

| Art.-Nr. | Material | Size (cm) |
|----------|---|-----------|
| 4-2228 | Bath mat linen twist
70% cotton, 30% linen, 2250 gsm | 60 x 100 |



071 nature

~ The attractive shower rug with its distinctive textured pattern is especially suitable for smaller bathrooms. The heavy material with a linen proportion is particularly absorbent and hard-wearing and also dries quickly.

WELLNESS Shower rug

| Art.-Nr. | Material | Size (cm) |
|----------|---|-----------|
| 4-2279 | Shower rug
85% cotton, 15% linen, 1700 gsm | 50 x 80 |

~ The fluffy sarong with adjustable press studs and attached pocket is both practical and stylish. Thanks to the special Spinair fibre used, it can absorb a lot of moisture and dries again quickly.

The extra soft kilt with press studs and attached pocket is the ideal sauna accessory. It is made from the cotton hollow fibre Spinair that ensures high water absorption and fast drying time.



869 nature



869 nature

WELLNESS Sarong & Kilt

| Art.-Nr. | Material | Size |
|-------------|---|-------|
| 2-7481/0751 | Sarong with chenille tucks
100% cotton (Spinair), length 85 cm | 40/48 |
| 2-7480/0751 | Kilt with chenille tucks
100% cotton (Spinair), length 50 cm | 48/56 |



869 nature

WELLNESS Hooded bathrobe

| Art.-Nr. | Material | Size |
|-------------|--|--------------------------------|
| 2-7194/0751 | Hooded bathrobe with chenille tucks
100% cotton (Spinair), length 140 cm, 520 gsm | XS
S
M
L
XL
XXL |

~ The extra long and super cuddly unisex hooded bathrobe with matching chenille border is made from the innovative cotton fibre Spinair - making it particularly absorbent and quick drying.

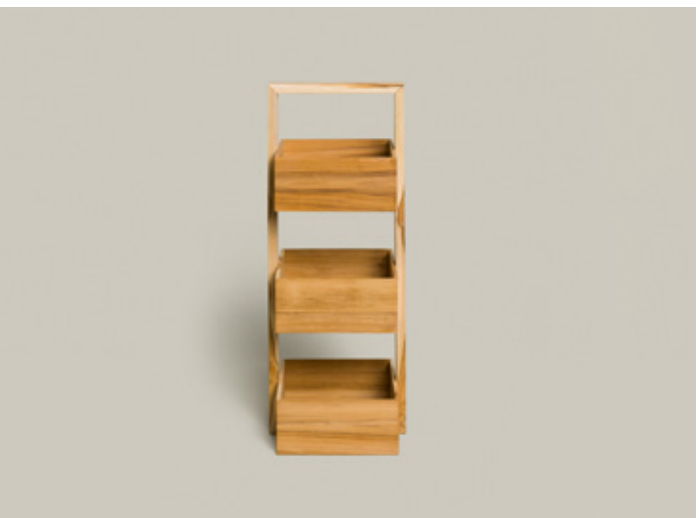




WELLNESS Plain
0-5537/8711
071 nature



A



B



C



D



E

FITS PERFECTLY TO WELLNESS

A. Sauna ^{p.244} — B. Teak ^{p.256} — C. Signature ^{p.312} — D. Apothecary ^{p.308} — E. Bamboo ^{p.292}

EDEN

The combination of natural cotton and linen has given rise to the elegant yet purist EDEN collection. The different designs have captivatingly intricate textures, achieved through the artful interweaving of natural-coloured yarn in the weft for the loops and black yarn in the warp.

The high cotton content ensures the typical valuable product properties such as high absorbency, quick drying time, easy care and durability. The linen content creates the pleasantly pithy feel, which provides a light massage effect when drying. The alcantara label and high-quality hems perfectly complement the collection.





~ The elegant shawl collar robe captivates with its elegant check structure and feels particularly pleasant on the skin thanks to the soft velour. The patch pockets and tie belt are both practical and beautiful details.



081 nature/black

EDEN Shawl collar bathrobe

| Art.-Nr. | Material | Size |
|-------------|---|--------------------------|
| 2-7488/0909 | Shawl collar bathrobe, velours
80% cotton, 20% linen, length 120 cm, 455 gsm | S
M
L
XL
XXL |



081 nature/black

EDEN Check structure

| Art.-Nr. | Material | Size (cm) |
|-------------|---|----------------------|
| 1-0156/5021 | Check structure velours
80% cotton, 20% linen, 560 gsm | 50 x 100
80 x 150 |



The attractive hand and shower towels have a stunningly distinctive check structure. The high-quality yarn mix feels particularly pleasant on the skin thanks to the soft velour surface and at the same time provides a light massage when drying off.



081 nature/black

~~~~~ The towel series impresses with its distinctive piquée texture and its pithy yet soft feel. The material feels particularly pleasant on the skin and at the same time provides a light massage when drying off.

EDEN Piquée structure

| Art.-Nr.    | Material                                                            | Size (cm) |
|-------------|---------------------------------------------------------------------|-----------|
| 1-0148/8942 | Structured piquée with looped hem<br>80% cotton, 20% linen, 580 gsm | 50 x 100  |
|             |                                                                     | 80 x 150  |
|             |                                                                     | 80 x 200  |
|             |                                                                     |           |



081 nature/black

~~~~~ The high-quality material mix of natural cotton and black linen give this purist collection its special look. The stylish design is a winner with its eye-catching wide pin-tuck border.

EDEN Piped border

| Art.-Nr. | Material | Size (cm) |
|-------------|--|-----------|
| 1-0151/8944 | Piped border
80% cotton, 20% linen, 590 gsm | 15 x 20 |
| | | 30 x 30 |
| | | 30 x 50 |
| | | 50 x 100 |
| | | 80 x 150 |
| | | 80 x 200 |



081 nature/black

EDEN Horizontal stripes

| Art.-Nr. | Material | Size (cm) |
|-------------|---|----------------------|
| 1-0148/8942 | Structured piquée with looped hem
80% cotton, 20% linen, 580 gsm | 50 x 100
80 x 150 |

~ The hand and shower towels with their purist horizontal stripe design have an impressively intricate look and pleasantly pithy feel. The high-quality folded hem and the discreet label further embellish the collection.



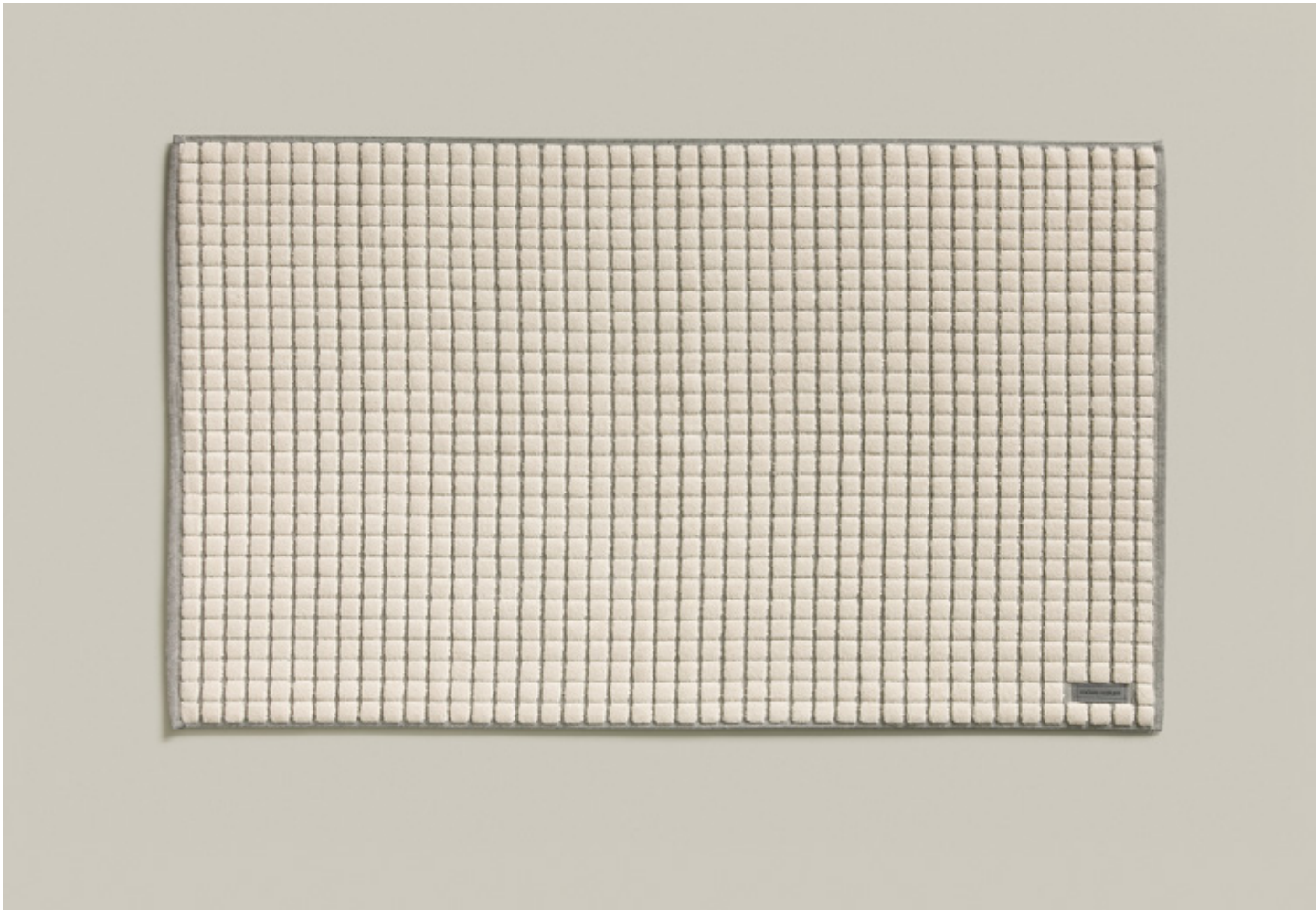


081 nature/black

~~~~~ The elegant squared pattern of the hand and shower towels is created by the intricate weaving of the black warp and natural-coloured yarn. The linen content creates the pithy feel, which provides a light massage effect.

EDEN Square structure

| Art.-Nr.    | Material                                                           | Size (cm)            |
|-------------|--------------------------------------------------------------------|----------------------|
| 1-0875/8942 | Square structure with looped hem<br>80% cotton, 20% linen, 580 gsm | 50 x 100<br>80 x 150 |



869 nature/black

~~~~~ The attractive bathmat immediately becomes an eye-catcher with its special mix of natural and black yarn. The elaborate weaving technique creates the high-pile check structure, which makes it extra soft and absorbent.

EDEN Bath mat

| Art.-Nr. | Material | Size (cm) |
|-------------|--|---------------------------------|
| 1-0347/8127 | Bath mat wtih check structure
100% cotton, 1440 gsm | 60 x 60
60 x 100
60 x 130 |

~ This comfortable sarong in an attractive check structure is a practical alternative to the classic bathrobe. It can be easily adjusted to the desired size via the press studs. The soft velour feels pleasant on the skin.

The purist kilt appeals with its elegant check structure in velour. The practical press studs make it easy and comfortable to adjust the size, the patch pocket is useful and chic at the same time.



081 nature/black



081 nature/black

EDEN Sarong & Kilt

| Art.-Nr. | Material | Size |
|-------------|---|-------|
| 2-7490/0909 | Sarong with check structure, velours
80% cotton, 20% linen, length 85 cm | 40/48 |
| 2-7489/0909 | Kilt with check structure, velours
80% cotton, 20% linen, length 50 cm | 48/56 |



BAMBOO
4-4295
081 black/grey



A



B



C



D



E



F



G



H



I

FITS PERFECTLY TO EDEN

A. Tube ^{p.298} — B. Eden ^{p.200} — C. New Orbit ^{p.272} — D. Essentials ^{p.310} — E. New Orbit ^{p.272}
F. Eden ^{p.200} — G. New Orbit ^{p.272} — H. Eden ^{p.200} — I. Tube ^{p.298}

BATHROBES





081 black

PAISLEY
Shawl collar bathrobe

| | Art.-Nr. | Material | Size |
|--|-------------|--|-------------------|
| The calf-length and stylish velour bathrobe impresses with its softness and eye-catching all-over paisley pattern. The elegant shawl collar and patch pockets are finished with a high-quality white satin piping. | 2-7927/0903 | Shawl collar bathrobe, velour, 100% cotton, length 125 cm, 385 gsm | S
M
L
XL |



530 arctic¹



843 graphite²

LOFT Kimono

| | Art.-Nr. | Material | Size |
|--|-------------|---|--------------------------------|
| The high-tech Spinair fibre ensures that the luxurious unisex kimono is particularly voluminous, soft and cosy. The stylish trim is made of high-quality chenille tucks. | 2-7839/0551 | Kimono, 100% cotton (Spinair), length 120 cm, 380 gsm | XS
S
M
L
XL
XXL |

¹ available in XS – XL

² available in S – XXL



015 snow/yellow



085 snow/stone



001 snow



842 graphite

SUMMER PIQUÉE Kimono

| | Art.-Nr. | Material | Size |
|---|-------------|--|------------------|
| This summery kimono is coordinated with the towel series. The prominent stripes that run from the collar to the hem make it an instant eye-catcher. Patch pockets and a tie belt provide extra comfort. | 2-7974/0175 | Kimono,
waffle piquée
100% cotton, length
110 cm, 350 gsm | XS (only in 015) |
| | | | S |
| | | | M |
| | | | L |
| | | | XL (only in 085) |

PIQUÉE Hooded bathrobe

| | Art.-Nr. | Material | Size |
|---|-------------|---|------|
| The light unisex hooded bathrobe was produced using a special weaving technique. This creates the characteristic relief structure, which makes it feel good and extra soft on the skin. | 2-7650/0175 | Hooded bathrobe,
waffle piquée 100%
cotton, length 120 cm,
290 gms | S |
| | | | M |
| | | | L |
| | | | XL |
| | | | |



081 grey



ICONIC Hooded bathrobe

| Art.-Nr. | Material | Size |
|-------------|---|------|
| 2-7984/0672 | Jersey hooded robe with embroidered seagull signet, 56% polyester, 44% cotton, length 120 cm, 290 gsm | XS |
| | | S |
| | | M |
| | | L |
| | | XL |

It doesn't get much cosier than this! The grey jersey hooded robe is unbelievably soft and is a winner with its sporty details: knitted rib trims on the sleeves, patch pockets with decorative stitching, embroidered seagull signet and casual tie belt.



001 snow¹



075 ruby¹



596 deep sea²



843 graphite²

HOMEWEAR Kimono

| Art.-Nr. | Material | Size |
|-------------|---|------|
| 2-7612/0663 | Kimono, waffle piquée
100% cotton, length 110
cm, 200 gsm | S |
| | | M |
| | | L |
| | | XL |
| | | XXL |
| | | XXXL |

¹ are available in S – XXL

² are available in S – XXXL



017 ivory¹



199 black²



823 silver grey³



761 burgundy⁴

HOMEWEAR

Shawl collar bathrobe

| | Art.-Nr. | Material | Size |
|---|-------------|---|------|
| The cuddly soft shawl collar bathrobe made of high-quality velour is both comfortable and sophisticated. The elegant style is further emphasised by lovely details such as the fine piping and the embroidered MÖVE signet on the sleeve. | 2-7202/0925 | Shawl collar bathrobe, 100% cotton velours length 125 cm, 420 gsm | XS |
| | | | S |
| | | | M |
| | | | L |
| | | | XL |
| | | | XXL |
| | | | XXXL |

¹ is available in XS – XL

² is available in S – XXXL

³ is available in XS – XXXL

⁴ is available in S – XXL



829 silver

HOMEWEAR Hooded bathrobe

| | Art.-Nr. | Material | Size |
|---|-------------|--|----------------------|
| The light hooded bathrobe made of cuddly soft terry towelling is particularly comfortable thanks to its airy cut and the large hood. The noble edging made of high-quality satin gives it that certain something and makes it a real eye-catcher. | 2-7686/0521 | Light weight hooded bath robe with piping, 100% cotton, length 115 cm, 295 gsm | 36
38
40
42 |



081 grey

HOMEWEAR Dressing gown

| | Art.-Nr. | Material | Size |
|---|-------------|--|----------------------------|
| This stylish dressing gown made of fine flannel is cuddly and wonderfully soft. The high-quality finish and stylish details such as patch pockets and dark contrasting piping make it an attractive and timeless classic. | 2-7872/0057 | Light weight dressing gown, flannel, 100% cotton, length 120 cm, 150 gsm | 48
50
52
54
56 |



081 black

HOMEWEAR Dressing gown

| | Art.-Nr. | Material | Size |
|--|-------------|---|------|
| The outer fabric of the elegant dressing gown has an impressive colourful woven check box structure; inside, the soft cotton terry towelling, which also appears on the shawl collar and cuffs, provides warmth. Practical details include the patch pockets and tie belt. | 2-7915/0058 | Light weight dressing gown with terry lining, 100% cotton, length 120 cm, 260 gsm | S |
| | | | M |
| | | | L |
| | | | XL |
| | | | |



081 grey

HOMEWEAR Dressing gown

| | Art.-Nr. | Material | Size |
|--|-------------|---|------|
| The stylish dressing gown is a winner with its striking tie pattern and the contrast between the smooth outer fabric and the soft cotton terry, which is also evident on the shawl collar and cuffs. The patch pockets and tie belt are practical details. | 2-7916/0058 | Light weight dressing gown with terry lining, 100% cotton, length 120 cm, 260 gsm | S |
| | | | M |
| | | | L |
| | | | XL |
| | | | |



761 burgundy



830 moonlight



843 graphite

HOMEWEAR
Hooded bathrobe

| | Art.-Nr. | Material | Size |
|---|-------------|---|------|
| The cosy knee-length bathrobe is a pleasant alternative for the warmer season and generally for all those who like it a little shorter. Attractive and practical details include the comfortable hood, the side pockets and the tie belt. | 2-7933/0563 | Hooded bathrobe, short
100% cotton, length 95 cm,
380 gsm | 36 |
| | | | 38 |
| | | | 40 |
| | | | 42 |
| | | | |



001 snow¹



075 ruby²



596 deep sea³



850 stone³

SUPERWUSCHEL
Hooded bathrobe

| | Art.-Nr. | Material | Size |
|--|-------------|---|--------------------------------|
| The attractive unisex hooded bathrobe in timeless colours is cosy and soft and is a winner with its classic, simple design. The highly absorbent material is easy-care and hard-wearing. | 2-7079/0661 | Hooded bathrobe
100% cotton, length
120 cm, 380 gsm | XS
S
M
L
XL
XXL |

¹ is available in XS – XXL
² is available in XS – XL
³ is available in S – XXL



869 nature



843 graphite



869 nature

WELLNESS Hooded bathrobe

| | Art.-Nr. | Material | Size |
|--|-------------|---|--------------------------------|
| The super cuddly and extra long unisex hooded bathrobe with matching chenille border is made from the innovative cotton fibre Spinair - making it particularly absorbent and quick drying. | 2-7194/0751 | Hooded bathrobe with chenille tucks
100% cotton (Spinair),
length 140 cm, 520 gsm | XS
S
M
L
XL
XXL |

WELLBEING Hooded bathrobe

| | Art.-Nr. | Material | Size |
|--|-------------|--|--------------------------------|
| The calf-length hooded robe with an attractive ribbed structure scores with its casual cut and cosy hood. The side pockets and tie belt are both practical and decorative. Made from organic cotton and linen from European cultivation. | 2-7879/0557 | Hooded bathrobe, ribbed structure, 85% organic cotton, 15% linen, length 135 cm, 400 gsm | XS
S
M
L
XL
XXL |



677 sea grass

WELLBEING Kimono

| | Art.-Nr. | Material | Size |
|--|-------------|---|-------------------|
| Produced in harmony with nature, this kimono invites you to snuggle up and relax. Practical details include the patch pockets and tie belt. The material used is organic cotton and linen from European cultivation. | 2-7908/0575 | Kimono, 85% organic cotton, 15% linen, length 120 cm, 385 gsm | S
M
L
XL |



677 sea grass

WELLBEING Sarong

The practical sarong with patch pocket is perfect for a relaxing day at the spa. The size is easy to adjust via the press studs. The sarong is made from organic cotton and linen from European cultivation.

| Art.-Nr. | Material | Size |
|-------------|--|-------|
| 2-7910/0575 | Sarong, 85% organic cotton, 15% linen, length 60 cm, 385 gsm | 40/48 |



677 sea grass

WELLBEING Kilt

This attractive kilt with patch pocket is produced in a particularly resource-friendly way and is the ideal companion in the sauna. The size is adjusted via practical press studs. The kilt is made from organic cotton and linen from European cultivation.

| Art.-Nr. | Material | Size |
|-------------|--|-------|
| 2-7909/0575 | Kilt, 85% organic cotton, 15% linen, length 60 cm, 385 gsm | 48/56 |



081 nature/black

EDEN Sarong

This comfortable sarong in an attractive check structure is a practical alternative to the classic bathrobe. It can be easily adjusted to the desired size via the press studs. The soft velour feels pleasant on the skin.

| Art.-Nr. | Material | Size |
|-------------|---|-------|
| 2-7490/0909 | Sarong with check structure, velours, 80% cotton, 20% linen, length 85 cm | 40/48 |



081 nature/black

EDEN Kilt

The purist kilt appeals with its elegant check structure in velour. The practical press studs make it easy and comfortable to adjust the size, the patch pocket is useful and chic at the same time.

| Art.-Nr. | Material | Size |
|-------------|---|-------|
| 2-7489/0909 | Kilt with check structure, velours, 80% cotton, 20% linen, length 50 cm | 48/56 |



081 nature/black

EDEN Shawl collar bathrobe

| | Art.-Nr. | Material | Size |
|---|-------------|--|--------------------------|
| The elegant shawl collar robe captivates with its elegant check structure and feels particularly pleasant on the skin thanks to the soft velour. The patch pockets and tie belt are both practical and beautiful details. | 2-7488/0909 | Shawl collar bathrobe, velours, 80% cotton, 20% linen, length 120 cm 455 gsm | S
M
L
XL
XXL |

ACCESSORIES





SAUNA



081 nature/black



081 nature/black

SAUNA Slippers

These stylish slippers are a must-have for a visit to the sauna or for relaxation afterwards. Through their special material composition, they feel particularly robust and are also easy to care for. The black edging creates a beautiful contrast.

| Art.-Nr. | Material | Size |
|----------|---------------------------------|--------------------------|
| 2-7944 | Slippers, 60% linen, 40% cotton | P2 (39-41)
P3 (42-44) |

SAUNA Massage belt

The back massage belt is both practical and stylish. Whether you use it in the bath, after a shower or when going to the sauna - with its handles on either end, it is easy to move over your back and provides an excellent exfoliating and massaging effect.

| Art.-Nr. | Material | Size (cm) |
|----------|--|-----------|
| 4-2287 | Back massage belt, 60% linen, 40% cotton | 15 x 70 |



081 nature/black



081 nature/black

SAUNA Massage sponge

The round massage sponge is a nice alternative to the massage glove. The high-quality black edging forms a beautiful contrast to the natural-coloured look of the sponge; at the same time, the diagonal band ensures a secure grip on the hand.

| Art.-Nr. | Material | Size (cm) |
|----------|---------------------------------------|-----------|
| 4-2288 | Massage sponge, 60% linen, 40% cotton | ø 15 |

SAUNA Massage glove

The attractive massage glove lives up to its name. The high percentage of linen gives it its grainy-textured surface, which provides a refreshing exfoliation and a light massage effect.

| Art.-Nr. | Material | Size (cm) |
|----------|---|-----------|
| 4-2289 | Massage wash glove, 60% linen, 40% cotton | 25 x 14 |



011 ivory



081 grey

STREAMLINE

STREAMLINE Soap dispenser

| | Art.-Nr. | Material | Size (cm) |
|---|----------|-------------------------|----------------|
| Subtle colours and organic shapes bring a touch of the sea into the bathroom. The slightly slanted soap dispenser made of high-quality acrylic glass has a screw-off cap and is equipped with a pump function. This makes it easy to fill it with your favourite soap or shampoo. | 4-4191 | Soap dispenser, acrylic | 8,5 x 7 x 15,5 |



011 ivory



081 grey

STREAMLINE Soap dish

| | Art.-Nr. | Material | Size (cm) |
|--|----------|--------------------|-------------|
| The gently curved soap dish in a streamlined shape is ideal for holding solid soap. Whether in the guest WC or in the bathroom. The shiny acrylic dish always looks good and the superb 3D effect makes it a real eye-catcher. | 4-4189 | Soap dish, acrylic | 14 x 10 x 4 |



011 ivory



081 grey

STREAMLINE Toothbrush holder

The gently streamlined shape of the toothbrush holder made of high-quality acrylic glass is a visual highlight in any bathroom. The combination of the coloured inside and the transparent outside creates a beautiful 3D effect. The tumbler is easy to clean and can hold several toothbrushes at the same time.

| Art.-Nr. | Material | Size (cm) |
|----------|----------------------------|-------------|
| 4-4190 | Toothbrush holder, acrylic | 7,5 x 7 x 9 |



011 ivory



081 grey

STREAMLINE Toilet brush set

The stylish toilet brush has a striking modern look and subtle colouring. High-quality acrylic glass not only gives it a shine, but also makes it easy to clean. A cover on the handle keeps the brush firmly in place in the container and also keeps it out of sight.

| Art.-Nr. | Material | Size (cm) |
|----------|---------------------------|--------------|
| 4-4192 | Toilet brush set, acrylic | 9 x 8,5 x 36 |

STREAMLINE Replacement brush

| Art.-Nr. | Material | Colors |
|----------|-------------------|------------------------|
| 4-4079 | Replacement brush | 001 white
199 black |



LINE



001 white

LINE Soap dispenser

The flat soap dispenser is an instant eye-catcher in any bathroom thanks to its special shape. Alternating white and transparent acrylic glass create the characteristic line that gives the series its name. The pumping function makes it easy to dose liquid soap, shampoo or lotions.

| Art.-Nr. | Material | Size (cm) |
|----------|-------------------------|-------------|
| 4-4227 | Soap dispenser, acrylic | 13 x 4 x 14 |



001 white

LINE Soap dish

The rectangular soap dish with slightly rounded corners is perfect for holding solid soap. Small elevations on its inside make it easy for the soap to dry again after use. The dish with the discrete line is also easy to clean and durable.

| Art.-Nr. | Material | Size (cm) |
|----------|--------------------|----------------|
| 4-4229 | Soap dish, acrylic | 12 x 8,5 x 2,5 |



001 white

LINE Toothbrush holder

The high-quality, elegant toothbrush holder is made in a captivating combination of white and transparent acrylic glass. This creates the characteristic line that gives the series its name. The toothbrush tumbler can comfortably hold one or more toothbrushes as well as toothpaste.

| Art.-Nr. | Material | Size (cm) |
|----------|----------------------------|------------|
| 4-4228 | Toothbrush holder, acrylic | ø 7,5 x 10 |



001 white

LINE Waste bin

The round waste bin made of white and transparent acrylic glass fits perfectly into any bathroom with its slightly shiny surface. The practical swing lid allows make-up tissues, empty toothpaste tubes and all kinds of bathroom waste to be disposed of quickly and hygienically.

| Art.-Nr. | Material | Size (cm) |
|----------|--------------------|-------------|
| 4-4231 | Waste bin, acrylic | ø 18 x 24,5 |



001 white

LINE Toilet brush set

White acrylic glass with a transparent line gives the elegant toilet brush its name. The shiny toilet set consists of a cylindrical bowl and a toilet brush, which is hidden from sight by a cover. The smooth surface makes the material easy to clean.

| Art.-Nr. | Material | Size (cm) |
|----------|---------------------------|-----------|
| 4-4230 | Toilet brush set, acrylic | ø 8 x 37 |

LINE Replacement brush

| Art.-Nr. | Material | Colors |
|----------|-------------------|---------------------|
| 4-4079 | Replacement brush | 001 snow, 199 black |



TEAK



TEAK Storage set

The attractive storage set made of sustainable teak wood consists of a tray and four boxes in which small items such as jewellery or hair clips can be stored perfectly. The different sizes of the containers add variety while the practical tray holds everything together.

| Art.-Nr. | Material | Size (cm) |
|----------|------------------------------------|--------------|
| 4-4236 | Storage set, 5 pieces
teak wood | 50 x 10 x 11 |



071 wood

TEAK Shelf

The practical portable shelf unit with three storage compartments brings the trendy Scandinavian look into the bathroom with its teak wood and clean shape. The handle makes the shelf mobile and makes it possible to have important products quickly in the right place. The unique grain also provides a visual highlight.

| Art.-Nr. | Material | Size (cm) |
|----------|-------------------------------|--------------|
| 4-4237 | Shelf, portable,
teak wood | 30 x 22 x 81 |



071 wood

TEAK Tissue box

The square cosmetic tissue box is made of untreated teak and is a winner with its warm surface with unique grain. To create an attractive look in the bathroom or living room, simply place the box over the commercially available tissue boxes made of cardboard.

| Art.-Nr. | Material | Size (cm) |
|----------|----------------------------------|--------------|
| 4-4234 | Tissue box, square,
teak wood | 14 x 14 x 13 |



071 wood

TEAK Soap dispenser

The sustainable soap dispenser made of high-quality teak wood brings modern Scandinavian design into the bathroom. The elegant dispenser also radiates warmth and naturalness. The practical pump made of stainless steel can be easily unscrewed and allows liquids to be poured in easily.

| Art.-Nr. | Material | Size (cm) |
|----------|--|------------|
| 4-0964 | Soap dispenser, teak wood with stainless steel | 7 x 7 x 20 |



071 wood

TEAK Toothbrush holder

With this toothbrush holder, high-quality teak wood is combined with meticulous workmanship in harmony with nature. With its beautiful organic shape, it is ideal for the bathroom and provides a simple Scandinavian look that is warm and natural at the same time. Each piece is unique!

| Art.-Nr. | Material | Size (cm) |
|----------|------------------------------|-----------|
| 4-0966 | Toothbrush holder, teak wood | ø 7 x 10 |



071 wood

TEAK Soap dish

Natural material and high-quality workmanship make the soap dish a real eye-catcher. It is made of sustainably grown teak wood with a unique grain and is truly one-of-a-kind. The natural oils in the wood protect it against humidity, the rubber feet on the underside ensure a firm grip.

| Art.-Nr. | Material | Size (cm) |
|----------|----------------------|------------|
| 4-0967 | Soap dish, teak wood | 12 x 8 x 2 |



071 wood

TEAK Tissue box

The practical and elegant cosmetic tissue box made of natural teak is perfect for holding cardboard tissue boxes in style. The warm natural material used makes the cosmetic tissue box truly unique and is a real eye-catcher not only in the bathroom.

| Art.-Nr. | Material | Size (cm) |
|----------|-----------------------|---------------|
| 4-0968 | Tissue box, teak wood | 24,5 x 14 x 8 |



071 wood

TEAK Toilet paper holder

The practical toilet roll container made of sustainably grown teak wood is a winner with its beautiful feel and look and will quickly become an eye-catcher in the bathroom. It can conveniently hold up to three rolls of toilet paper, which can be easily taken out through the narrow opening.

| Art.-Nr. | Material | Size (cm) |
|----------|--------------------------------|--------------|
| 4-4235 | Toilet paper holder, teak wood | 15 x 15 x 33 |



071 wood

TEAK Cotton box

The round cotton wool box made of sustainably grown teak is a great eye-catcher in the bathroom or on the dressing table. It can be used for storing small items such as cotton wool pads or cotton buds in style, keeping them ready to hand at all times. The easily removable lid protects the contents and completes the look of the box.

| Art.-Nr. | Material | Size (cm) |
|----------|-----------------------|-----------|
| 4-4009 | Cotton box, teak wood | ø 9,5 x 8 |



071 wood

TEAK Toilet brush set

The noble mixture of natural teak and high-quality stainless steel makes the toilet brush a real eye-catcher. The round stainless steel insert with integrated ventilation ensures that the brush dries quickly and also serves as a practical cover. The set remains firmly on the floor thanks to small rubber feet.

| Art.-Nr. | Material | Size (cm) |
|----------|--|--------------|
| 4-0970 | Toilet brush set, teak wood with stainless steel | 11 x 11 x 41 |

TEAK Replacement brush

| Art.-Nr. | Material | Color |
|----------|-------------------|-----------|
| 4-4147 | Replacement brush | 199 black |



BLACK & WHITE



081 black/snow

BLACK & WHITE Soap dispenser

| | Art.-Nr. | Material | Size (cm) |
|---|----------|------------------------------|--------------|
| The attractive soap dispenser made of real marble is of high quality and tasteful - and it is also easy to combine with other items. The simple elegance of the finely grained marble in a black and white colour block comes into its own in both the bathroom and the guest WC. | 4-4265 | Soap dispenser, marble/metal | 7 x 7 x 19,7 |



081 black/snow

BLACK & WHITE Toothbrush holder

The heavy toothbrush holder in black and white look is a winner with its high-quality workmanship and the individual veining of the different coloured marble blocks. It is elegant and functional at the same time and easily holds one or more toothbrushes plus the toothpaste.

| Art.-Nr. | Material | Size (cm) |
|----------|---------------------------|------------------|
| 4-4266 | Toothbrush holder, marble | 7,1 x 7,1 x 11,1 |



081 black/snow

BLACK & WHITE Soap dish

A white and a black marble block with individual veining have been combined to create this tasteful and at the same time functional soap dish. Solid bars of soap rest securely in the rounded trough; the smooth heavy material makes the dish scratch-resistant and easy to clean.

| Art.-Nr. | Material | Size (cm) |
|----------|-------------------|------------------|
| 4-4267 | Soap dish, marble | 13,7 x 9,6 x 3,1 |



081 black/snow

BLACK & WHITE Toilet brush set

The individual veining of the white and black marble blocks makes the toilet brush unique and adds a touch of luxury to any bathroom. The heavy toilet brush set stands securely on the floor and is both scratch-resistant and durable. The plastic cover ensures hygiene.

| Art.-Nr. | Material | Size (cm) |
|----------|--------------------------------|----------------|
| 4-4268 | Toilet brush set, marble/metal | 11 x 11 x 38,1 |

BLACK & WHITE Replacement brush

| Art.-Nr. | Material | Color |
|----------|-------------------|-----------|
| 4-4275 | Replacement brush | 199 black |



BLACK VELVET



199 black

BLACK VELVET Soap dispenser

| | Art.-Nr. | Material | Size (cm) |
|---|----------|--------------------------------|------------|
| The attractive soap dispenser made of coated ceramic is a winner with its elegant look and pleasant feel. The rich black brings a modern and stylish look to the bathroom. The soap dispenser has a pumping function and can be easily filled with your favourite soap. | 4-4282 | Soap dispenser, coated ceramic | ø 8 x 13,5 |



199 black

BLACK VELVET Toothbrush holder

The elegant toothbrush holder in rich black brings a modern and cool look to the bathroom. The combination of a shiny inside and matt outside also creates a wow effect. The tumbler in high-quality coated ceramic is easy to clean and care for.

| Art.-Nr. | Material | Size (cm) |
|----------|-----------------------------------|-----------|
| 4-4283 | Toothbrush holder, coated ceramic | ø 8 x 10 |



199 black

BLACK VELVET Soap dish

The stylish oval soap dish made of coated ceramic is ideal for keeping solid soaps safe and dry. Whether in the guest toilet or in the bathroom - the practical soap dish in matt black is also a real eye-catcher and easy to clean.

| Art.-Nr. | Material | Size (cm) |
|----------|---------------------------|----------------|
| 4-4284 | Soap dish, coated ceramic | 13 x 8,5 x 2,5 |



199 black

BLACK VELVET Toilet brush set

The rounded toilet brush set in rich black is a winner with its timeless look. The high-quality coated ceramic makes it durable and easy to clean. A cover on the handle keeps the brush firmly in place in the container and also keeps it out of sight.

| Art.-Nr. | Material | Size (cm) |
|----------|----------------------------------|-------------|
| 4-4285 | Toilet brush set, coated ceramic | ø 10 x 38,5 |

BLACK VELVET Replacement brush

| Art.-Nr. | Material | Color |
|----------|-------------------|-----------|
| 4-4290 | Replacement brush | 199 black |



NEW ORBIT



843 graphite

NEW ORBIT Soap dispenser

With its pretty spherical shape, the soap dispenser makes an attractive addition to the bathroom. The innovative coating of the ceramic gives it a matt, peachy look and a beautiful feel. Thanks to the screw-off pump, liquids can be easily dispensed and filled.

| Art.-Nr. | Material | Size (cm) |
|----------|--------------------------------|-----------|
| 4-0799 | Soap dispenser, coated ceramic | ø 11 x 14 |



843 graphite

NEW ORBIT Toothbrush holder

The combination of a beautiful spherical shape and pleasant material gives the toothbrush holder a particularly pleasant look and feel. The ceramic has been specially coated to give it a velvety surface. Several practical openings keep the toothbrushes firmly in place.

| Art.-Nr. | Material | Size (cm) |
|----------|-----------------------------------|-------------|
| 4-0796 | Toothbrush holder, coated ceramic | ø 10,5 x 10 |



843 graphite

NEW ORBIT Toilet brush set

The spherical toilet brush set made of matt-coated ceramic is a real eye-catcher in the bathroom as well as in the guest toilet. The ceramic has been specially coated to give it a velvety surface. The round cover made of black synthetic keeps the brush firmly in place in the container and ensures hygiene.

| Art.-Nr. | Material | Size (cm) |
|----------|----------------------------------|---------------|
| 4-0798 | Toilet brush set, coated ceramic | ø 14,5 x 42,5 |

NEW ORBIT Replacement brush

| Art.-Nr. | Material | Color |
|----------|-------------------|-----------|
| 4-0829 | Replacement brush | 199 black |



DECO



829 silver

DECO Soap dispenser

To give the soap dispenser a sleek look, high-quality stainless steel is elaborately processed and then polished to a high gloss. The practical pump dispenser allows liquids to be refilled easily and dosed precisely. Small rubber feet ensure that the dispenser stands securely even on slippery surfaces.

| Art.-Nr. | Material | | |
|-----------|---------------------------------|--------|---------|
| 4-4040 | Soap dispenser, stainless steel | | |
| Size (cm) | | PP (€) | RRP (€) |
| ø 9 x 13 | | 15,20 | 34,95 |



829 silver

DECO Toothbrush holder

The cylindrical toothbrush holder is made of high-quality stainless steel, which is elaborately finished and polished to a high gloss. The material is both elegant and easy to clean - ideal for daily use in the bathroom. The elegant container can hold several toothbrushes and toothpaste at the same time.

| Art.-Nr. | Material | | |
|-----------|------------------------------------|---------|--|
| 4-4042 | Toothbrush holder, stainless steel | | |
| Size (cm) | PP (€) | RRP (€) | |
| ø 8 x 8 | 10,80 | 24,95 | |



829 silver

DECO Toilet brush set

This decorative and functional set consists of a container polished to a high gloss and a toilet brush with a long stainless steel handle. The plastic cover holds the brush in place and also hides it from sight. Small rubber feet ensure that the set stands stably on the floor.

| Art.-Nr. | Material | | |
|-----------|-----------------------------------|---------|--|
| 4-4043 | Toilet brush set, stainless steel | | |
| Size (cm) | PP (€) | RRP (€) | |
| ø 10 x 49 | 26,00 | 59,95 | |

DECO Replacement brush

| Art.-Nr. | Material | | |
|-----------|-------------------|--------|---------|
| 4-0829 | Replacement brush | | |
| Color | | PP (€) | RRP (€) |
| 199 black | | 2,00 | 4,50 |



829 silver

STAND Towel rack

The black base made of shatterproof glass keeps the two-armed chrome towel rail standing firmly on the floor. The two arms are slightly curved and are at different heights to allow hand or guest towels to dry easily. The high-quality material is robust and easy to clean.

| Art.-Nr. | Material | | |
|--------------|--|---------|--|
| 4-0878 | Towel rack with unbreakable glass, chrome-plated | | |
| Size (cm) | PP (€) | RRP (€) | |
| 50 x 23 x 82 | 42,50 | 99,95 | |

STAND



829 silver

STAND Toilet paper holder

The chrome-plated, slightly curved toilet roll holder can hold one roll of toilet paper. With the toilet brush placed next to it, the holder has yet another practical use. The oval base made of shatter-proof glass keeps it standing firmly on the floor and is also easy to clean.

| Art.-Nr. | Material | | |
|----------------|---|---------|--|
| 4-0879 | Toilet paper holder with unbreakable glass, chrome-plated | | |
| Size (cm) | PP (€) | RRP (€) | |
| 28 x 20 x 71,5 | 42,50 | 99,95 | |

STAND Replacement brush

| Art.-Nr. | Material | | |
|---------------------|-------------------|---------|--|
| 4-0624 | Replacement brush | | |
| Colors | PP (€) | RRP (€) | |
| 001 snow, 199 black | 2,60 | 5,95 | |



829 silver

PUSH



199 black



001 snow

PUSH Pedal waste bin

The smart retro-style waste bin is opened with a foot pedal, making it easy to dispose of rubbish conveniently and hygienically. The compact size and the three colour combinations, makes the bin suitable in any bathroom or guest toilet. The robust finish and stainless steel combination is durable and easy to clean.

| Art.-Nr. | Material | | |
|-------------|----------------------------------|---------|--|
| 4-0891 | Pedal waste bin, stainless steel | | |
| Size (cm) | PP (€) | RRP (€) | |
| ø 22 x 29,5 | 17,80 | 39,95 | |



199 black

VELVET Towel rack

The sturdy towel rail is a winner with its two arms that are fixed at different heights and allow several towels to be dried at the same time. The solid base prevents it from tipping over. The high-quality finish and the coated metal make it easy to care for and clean.

| Art.-Nr. | Material | | |
|--------------|--------------------------|---------|--|
| 4-4233 | Towel rack, coated metal | | |
| Size (cm) | PP (€) | RRP (€) | |
| 30 x 20 x 82 | 42,50 | 99,95 | |



199 black

VELVET Waste bin

With its slightly tapered shape and simple look, the no-frills synthetic waste bin is both unobtrusive and eye-catching. The lowering mechanism in the lid allows it to close slowly and quietly; it can be opened very easily with the small pedal.

| Art.-Nr. | Material | | |
|--------------|-----------------------|--------|---------|
| 4-4281 | Waste bin 5L, plastic | | |
| Size (cm) | | PP (€) | RRP (€) |
| 27 x 23 x 27 | | 19,50 | 44,95 |



199 black

VELVET Toilet brush holder

The free-standing toilet roll holder made of coated metal is modern and straightforward in design - and also practical and functional with its integrated toilet brush. The sturdy baseplate ensures stability and prevents it from slipping on the floor; the high-quality material is easy to clean.

| Art.-Nr. | Material | | |
|--------------|--|---------|--|
| 4-4232 | Toilet brush and toilet paper holder, coated metal | | |
| Size (cm) | PP (€) | RRP (€) | |
| 20 x 20 x 71 | 42,50 | 99,95 | |

VELVET Replacement brush

| Art.-Nr. | Material | | |
|---------------------|-------------------|--------|---------|
| 4-0624 | Replacement brush | | |
| | | | |
| Colors | | PP (€) | RRP (€) |
| 001 snow, 199 black | | 2,60 | 5,95 |



MIRRORS



002 silver



002 silver

MIRRORS

Mirror oval, suction cups

Thanks to the simple attachment with suction cups, the oval mirror stays securely in place on smooth walls or on a mirror - without drilling. The practical 5x magnification does not distort your image and helps to ensure that you don't miss anything. High-quality stainless steel ensures easy cleaning and durability.

| Art.-Nr. | Material | Size (cm) |
|----------|--|-----------|
| 4-0776 | Mirror oval with suction cups, stainless steel, 5x magnification | ø 15 x 20 |

MIRRORS

Mirror small, stainless steel

The concave mirror with stand is the ideal companion for your daily beauty routine thanks to its 5x magnification. With its high-quality stainless steel and attractive shape, it is perfect in the bathroom and on the dressing table, but also a real eye-catcher in other rooms.

| Art.-Nr. | Material | Size (cm) |
|----------|---|-----------|
| 4-0777 | Mirror small, stainless steel, 5x magnification | 15,5 x 19 |



002 silver



002 silver

MIRRORS

Mirror with light

The round cosmetic mirror with integrated lighting helps to ensure that you don't miss anything. The two-sided use is practical: either with or without 5x magnification. The sturdy base ensures that the mirror stands securely on even surfaces; the shiny chromed metal is also easy to clean.

| Art.-Nr. | Material | Size (cm) |
|----------|---|-----------|
| 4-0775 | Mirror with light, 25W E14, chrome plated, 5x magnification | ø 22 x 42 |

MIRRORS

Mirror with swinging arm

The round mirror with swivel arm is mounted directly on the wall and can be illuminated thanks to the built-in power supply. The two-sided use is also practical: either with or without 5x magnification. The high-quality chromed metal makes the mirror durable and perfect for use in the bathroom.

| Art.-Nr. | Material | Size (cm) |
|----------|---|-----------|
| 4-0901 | Mirror with swinging arm, chrome plated, 5x magnification | ø 22 |

BASKETS & MORE





081 grey

BAMBOO

BAMBOO laundry basket

The laundry basket with two separate compartments combines natural bamboo with fine, dirt-repellent coated canvas. The laundry can be conveniently pre-sorted in the two compartments. It is also well-thought-out: when the basket is not in use, it can be folded up and stored away compactly.

| Art.-Nr. | Material | Size (cm) |
|----------|--|--------------|
| 4-0780 | Foldable laundry basket, divided, bamboo with canvas | 56 x 51 x 66 |



081 grey

BAMBOO Laundry baskets

In the foldable laundry basket, worn items can be easily collected and stored away stylishly until the next wash. The sustainable bamboo frame gives the insert made of dirt-repellent coated canvas support and stability. The basket can be stored away compactly by folding it up.

| Art.-Nr. | Material | Size (cm) |
|----------|---|------------------|
| 4-0779 | Foldable laundry basket, bamboo with canvas | 38 x 40,5 x 67,5 |



081 grey

The foldable laundry basket with a stable frame made of renewable bamboo wood is lined with a dirt-repellent coated canvas fabric. Thanks to the integrated folding lid, the laundry disappears out of sight - and when the basket is empty, it can simply be folded up and stored away compactly.

| Art.-Nr. | Material | Size (cm) |
|----------|---|--------------|
| 4-4198 | Foldable laundry basket with lid, divided, bamboo with canvas | 39 x 46 x 66 |



081 grey

BAMBOO Laundry basket

| | Art.-Nr. | Material | Size (cm) |
|--|----------|---|--------------|
| The practical laundry chest with all-round frame in natural bamboo has two separate compartments with flap lids. This makes it easier to sort the laundry in advance. Side cut-outs in the grey canvas, which has a dirt-repellent coating on the inside, serve as comfortable carrying handles. | 4-4075 | Laundry basket, divided, bamboo with canvas and lid | 54 x 33 x 50 |



071 wood

BAMBOO Laundry basket

| | Art.-Nr. | Material | Size (cm) |
|--|----------|---|----------------|
| The slatted look of the frame in sustainable bamboo gives the laundry basket a unique look. The canvas laundry bag has a dirt-repellent coating on the inside and a hinged lid. The lid keeps the laundry out of sight and at the same time ensures a tidy appearance. | 4-0905 | Laundry basket, divided, bamboo with canvas and lid | 40 x 35,5 x 60 |



081 grey

WEAVE

| WEAVE Laundry basket | Art.-Nr. | Material | Size (cm) |
|--|----------|----------------------------------|-----------|
| The lightweight laundry basket made of high-quality synthetic wicker stylishly holds worn items until the next wash. If the washing machine is a little further away, the practical handles make it easy to carry. The basket with the beautiful two-tone wicker pattern is robust, easy to clean and durable. | 4-4194 | Laundry basket, weaved synthetic | ø 40 x 50 |



081 grey

CANVAS

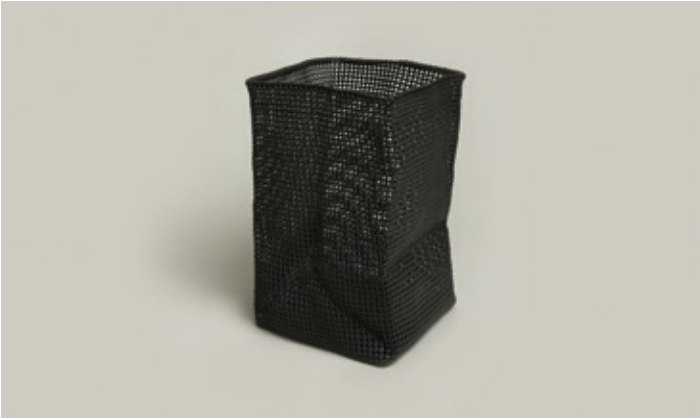
| CANVAS Laundry basket | Art.-Nr. | Material | Size (cm) |
|--|----------|-----------------------------------|-----------|
| The laundry basket made of coarsely woven material in a canvas look is simple yet stylish in design. The combination of the two shades of grey makes it a real eye-catcher. It is also easy to carry with the handles at the side. For a tidy look, simply tie up the cover. | 4-4195 | Laundry basket with cover, canvas | ø 30 x 50 |



002 off white



002 off white



199 black



199 black

TUBE

TUBE Laundry basket

The large handcrafted basket is extremely versatile and easy to clean at the same time. Thanks to the flexible material - plastic-coated metal wires - the shape can be adapted to suit the purpose. The basket is equally suitable as a trendy laundry container or as an attractive wastepaper basket.

| Art.-Nr. | Material | Size (cm) |
|----------|--------------------------------------|--------------|
| 4-0241 | Laundry basket, large, flexible mesh | 33 x 33 x 51 |

TUBE Storage Basket

The small rectangular basket made of plastic-coated wire is both sleek and timeless in design and keeps things tidy in an instant. The flexible material makes it easy to bend into the desired shape and use for different purposes. The matt shiny innovative material is easy to clean and robust.

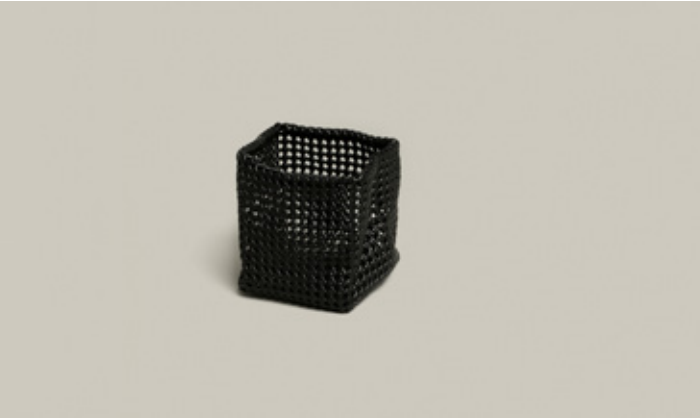
| Art.-Nr. | Material | Size (cm) |
|----------|---|----------------|
| 4-0271 | Storage basket, rectangular, small, flexible mesh | 16,5 x 28 x 18 |



002 off white



002 off white



199 black



199 black

TUBE Storage basket

The attractive square basket combines elaborate handwork with an innovative material. Thanks to the plastic-coated wires, it can be shaped and therefore adapted to the desired purpose. The basket is perfect for storing guest towels or washing gloves.

| Art.-Nr. | Material | Size (cm) |
|----------|---------------------------------------|--------------|
| 4-0422 | Storage basket, square, flexible mesh | 15 x 15 x 15 |

TUBE Storage basket

The small storage basket is made of flexible, plastic-coated metal wires. This innovative and stylish basket with a variety of uses is made by hand. Whether in the bathroom or on the desk: the rectangular basket looks great in any situation and is also easy to clean.

| Art.-Nr. | Material | Size (cm) |
|----------|--|-------------|
| 4-0423 | Storage basket, rectangular, flexible mesh | 30 x 15 x 9 |



082 light grey



081 dark grey

TWEED

TWEED Laundry basket

The laundry basket made of durable material in a tweed look has a simple yet elegant design. The all-round edging in shiny metal also provides a beautiful contrast. The cover can be laced up - so the inside remains hidden and the bathroom looks tidy.

| Art.-Nr. | Material | Size (cm) |
|----------|---------------------------------------|--------------|
| 4-4288 | Laundry basket with cover, tweed look | 35 x 35 x 50 |



082 light grey



081 dark grey



TWEED

Set of 3 storage baskets

The stylish baskets instantly bring tidiness and tranquillity to the home and bathroom. The practical storage baskets in a set of 3 provide a convenient place for bathroom utensils, cosmetics or small towelling items such as soap wipes or guest towels. The baskets can be closed easily and conveniently with the practical cover.

| Art.-Nr. | Material | Size (cm) |
|----------|---|--|
| 4-4289 | Set of 3 storage baskets with cover, tweed look | 30 x 30 x 18
27 x 27 x 16
24 x 24 x 14 |



071 wood

WOOD

| WOOD Crate | Art.-Nr. | Material | Size (cm) |
|---|----------|--------------------|----------------|
| The lattice box made of sturdy acacia wood is ideal for storing guest towels or other bathroom items. It is treated with natural oils to make the wood robust and resistant to water. Alone or together with other boxes, it creates a harmonious look in the bathroom. | 4-0715 | Crate, acacia wood | 28 x 28 x 13,5 |



071 wood

| WOOD Ladder | Art.-Nr. | Material | Size (cm) |
|--|----------|---------------------|--------------|
| With its four rungs, the acacia wood towel rail ladder is ideal for stylishly holding towels or other items of bathroom linen. Leaning against the wall, it adds a special touch to any room - from the bedroom to the bathroom, the ladder is always an eye-catcher and both practical and useful at the same time. | 4-0717 | Ladder, acacia wood | 60 x 190 x 4 |

CANDLES & SCENTS





WELLBEING



071 botanical extracts

WELLBEING Soy wax scented candle

The sustainable scented candle is made of pure natural soy wax, which burns slowly and is free of harmful substances. The pleasant sandalwood scent is released delicately and evenly into the air. The pretty glass jar with lid is also environmentally friendly, as both can be reused wonderfully. The burning time is approx 45 hours.

| Art.-Nr. | Material | Size (g) |
|----------|---|----------|
| 4-4272 | Soy wax scented candle in glass with lid, burning time approx. 45 hours | 230 |



072 lemongrass ginger



073 rich man amber



074 silver rain

APOTHECARY

APOTHECARY Scented candle

The attractive scented candles are a winner with their three unique scent compositions and trendy look. The brown glass, reminiscent of apothecary bottles, is packed in a recycled cardboard tube with a metal lid and has an unusual label. The burning time is approx. 45 hours.

| Art.-Nr. | Material | Size (g) |
|----------|--|----------|
| 4-4188 | Scented candle in brown glass, burning time approx. 45 hours | 230 |



072 lemongrass ginger



073 rich man amber



074 silver rain



APOTHECARY Aroma Diffuser

The three unique scent compounds of the aroma diffusers are visually reminiscent of apothecary bottles and - together with the unusual packaging made of a recycled cardboard tube with metal lid and label - make a real design statement. The rattan sticks release the scent slowly and delicately.

| Art.-Nr. | Material | Size (ml) |
|----------|---|-----------|
| 4-4187 | Aroma diffuser in brown pharmacist bottle | 200 |



073 linen



072 cotton



071 cashmere

ESSENTIALS

ESSENTIALS Scented candle

Finely coordinated scent compounds ensure an extraordinary experience with these candles. The scents bring back memories of freshly washed laundry, cooling linen or warming cashmere. The candles emit their scent slowly and evenly, the burning time is approx. 35 hours.

| Art.-Nr. | Material | Size (g) |
|----------|---|----------|
| 4-4240 | Scented candle in glass,
burning time approx. 35 hours | 140 |



073 linen



072 cotton



071 cashmere



ESSENTIALS Aroma Diffuser

Scents awaken memories. The compounds of these finely coordinated aroma diffusers provide extraordinary frequencies and evoke memories of fresh laundry, cool linen or warm cashmere. The scent is distributed slowly, discreetly and very evenly in the room air through the rattan sticks.

| Art.-Nr. | Material | Size (ml) |
|----------|----------------|-----------|
| 4-4241 | Aroma diffuser | 100 |



017 velvet cream



021 blood orange



071 amber

SIGNATURE

SIGNATURE Scented candle

| | Art.-Nr. | Material | Size (g) |
|---|----------|--|----------|
| The candles in the satin-finish glass are available in three different fragrant scents. The colour-coordinated packaging is printed all over with the MÖVE logo, which also gives it visual appeal. Thanks to the long burning time of approx. 50 hours, the candles are very efficient and long-lasting. | 4-0979 | Scented candle in glass with seagulls allover, burning time approx. 50 hours | 230 |



011 lemongrass



012 orange



031 lavender



051 bergamot



071 vanilla



072 sandalwood

SIGNATURE Aroma Diffuser

| | Art.-Nr. | Material | Size (ml) |
|--|----------|---|-----------|
| The room fragrances in the collection are not only pleasing to the nose, but are also visually eye-catching. The colours of the oils represent the respective fragrance and are presented particularly well in the pretty apothecary bottles. The number of rattan sticks used allows the intensity of the fragrance to be regulated individually. | 4-4102 | Aroma diffuser, apothecary bottle with cork stopper | 100 |



SOAPS



504 lemon



505 mint



509 fresh green



511 tangerine



513 lavender



520 camomile

SOAPS Glycerine soap

The decorative soaps with their transparent look set colourful accents in the bathroom or guest WC. They give your hands a pleasant fragrance and make them wonderfully soft. The skin-friendly glycerine makes the soap suitable even for sensitive skin. The embossed MÖVE lettering adds extra appeal.

| Art.-Nr. | Material | Size (g) |
|----------|----------------|----------|
| 4-0025 | Glycerine soap | 100 |

OEKO-TEX STANDARD 100

OEKO-TEX, which is now represented in over 60 countries worldwide, is an association of 18 independent research and testing institutes from Europe and Japan. Together the partners develop methods and limit values for testing textiles and leather and are also responsible for setting various standards, including the OEKO-TEX Standard 100. This standard is granted to all textiles tested for harmful substances – from yarn to finished product. All MÖVE terry towelling products have been awarded the OEKO-TEX Standard 100 and are also labelled – from washing glove to bathrobe – with the addition of Baby Class 1. This addition makes the certification even more important, as it means that our products are also suitable for both sensitive baby skin and allergy sufferers.



GOTS



GOTS means Global Organic Textile Standard and stands for the worldwide highest standard for the processing of textiles produced from organically grown raw materials. The institution consists of four prestigious organizations from the USA, Japan, England and the German IVN e.V. The aim is to offer consumers the greatest possible transparency and quality safety in their purchasing decisions. Therefore, strict and mandatory criteria have been defined along the entire production and supply chain. The GOTS standard covers production, confection, packaging, labelling, trade and distribution of all textiles made of at least 70% controlled organically produced natural fibres. The relevant criteria are valid worldwide and are also strictly controlled on site. In our current collection, the sustainably produced series ORGANIC has been awarded the GOTS certificate.

ORDER CONDITIONS

DELIVERY TERMS

Detailed order conditions are available on request.

VALIDITY

01 July – 31 December 2022

LIABILITY

For misprints we accept no liability. All dimensions given are approximate. Color deviations are possible for printing and production reasons. Product and dimensional deviations as well as price changes and the availability of individual products are reserved.

CREDITS

ART DIRECTION
Michael Ungerer / MÖVE

COPYWRITING
Susan Eichwald / MÖVE

DESIGN, LAYOUT, MOOD-PHOTOGRAPHY
Ira Brinkmann, Dirk Sonnenberg / ffine

PRODUCT PHOTOGRAPHY
Michael Tewes

STYLING
Leandra Bendorf / schroedorf & better life lab

HAIR & MAKE UP
Katja Maassen

FURTHER IMAGES
p. 57 / Ralfs Blumbergs via Unsplash
p. 58 / Ethan Bodnar via Unsplash
p. 58 / Ranurte via Unsplash
p. 59 / Janko Ferlic via Unsplash

THANK YOU VERY MUCH FOR THE FRIENDLY SUPPORT
HAGIUS, Berlin

All pictures published here (except for those on pages 56 — 59) and texts are the property of frottana Textil GmbH & Co. KG. The use of images and texts, even in part, is only possible with the consent of frottana Textil GmbH & Co. KG.

FROTTANA TEXTIL GMBH & CO. KG

Waltersdorfer Straße 54
02779 Großschönau
Tel: +49 358 41 82 90
Fax: +49 358 41 82 62
verkauf@moeve.de
moeve.de

